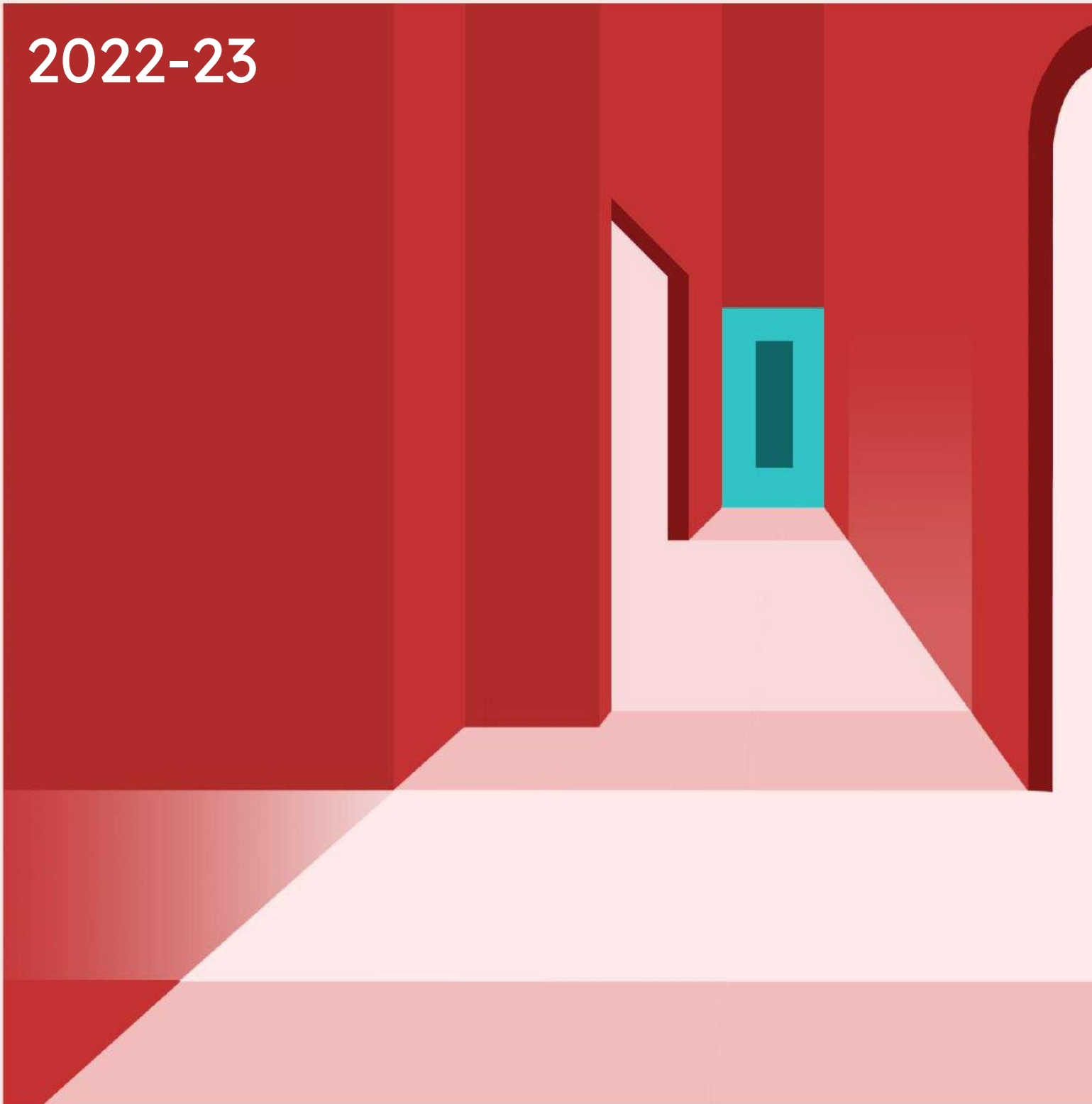




# PiCAGRAM

PILLAI COLLEGE OF ARCHITECTURE, NEW PANVEL

2022-23



Mahatma Education Society's  
**PILLAI COLLEGE OF ARCHITECTURE**  
New Panvel



*Pillai*

# CONTENTS



**01**  
CULTURAL  
EVENTS

**02**  
SPORTS  
EVENTS

**03**  
GUEST  
LECTURES

**04**  
COMPETITIONS

**05**  
DESIGN  
PORTFOLIOS



## WORLD ENVIRONMENT DAY

8th June, 2022

World Environment Day is observed with a motive to raise awareness and portray the importance of Mother Nature. This year's theme, 'Only One Earth' was to focus on the World's togetherness in the direction of creating an atmosphere encouraging peace, harmony, prosperity, and health by saving nature and life. By conducting a plantation drive on the college campus, Anubhuti MES Pillai's College of Architecture's social service wing celebrated the same. The event started with Dr. Sudnya Mahimkar, principal of PICA, planting a sapling. This was then followed by sapling plantation by the faculties, non-teaching staff, and the students of PICA.



## YOGA DAY 2022

21st June, 2022

Yoga is celebrated joyously worldwide as an activity which improves both the physical and mental health of oneself. This year, Pillai College of Architecture celebrated the annual event by inviting chief guest Mr. PARAG JAVADEKAR founder of Align Yoga. The program started with an introduction to the chief guest by the council members and an informative speech by the chief guest on the importance of yoga in daily life. The event then proceeded with the chief guest teaching yoga which included breathing exercises and asanas like Chakraasan, Vrikshaasana, and many more asanas and ended with Shavasana. The event was attended by students from all the years and faculty members along with the Principal and admin staff.

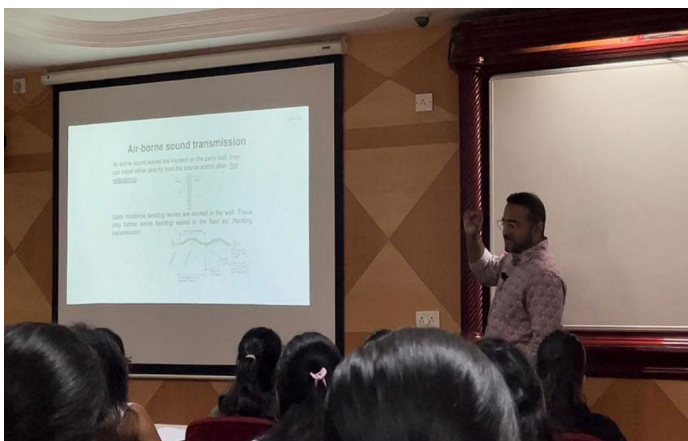






## ACOUSTIC 23rd JUNE, 2022

A guest lecture was held on the topic of ACOUSTICS in architecture by Ar. Rolins Thomas Roy. The lecture was conducted for 3rd year students for their subject Building Services. The objectives of this lecture were to help students to understand the Importance of acoustics in Architecture. He covered topics ranging from Fundamental Properties and characteristics of sound, the behavior of sound, noise control, and materials that have a huge role in architectural acoustics. This session made students discern how acoustics impact the spaces and the spatial experience and how to tackle this with ease of choice of materials and other strategies.



## BASICS OF INCUBATION CENTRE 8th JULY, 2022

A guest lecture was held with the intent to help students understand the logistics and functioning of an incubation center. The main aim was to provide insights to students on this topic by giving them a chance to interact with professionals of this field. The lecture started by a presentation which was presented by Dr. Priam Pillai and was followed by group discussions and doubt-clearing sessions. Dr. Priam Pillai explained the various stages involved in developing an idea to MVP (Minimum Viable Product) and also explained in detail about all stages involved in incubation process. The lecture also had a QnA session with Dr. Priam Pillai and Prof. Celina Joy. Overall, the lecture was successful in bringing clarity among students regarding the set-up and functioning of an incubation center.







## SAFETY MEASURES

25th JULY, 2022

The PiCA Archilogs Series 2022-2023 conducted its next session in the form of webinar by Prof. Tejashree Lakras for Sem 9 Design Dissertation subject and was arranged in the studio. Prof. Tejashree structured the session around the pointers like conception and structuring, implementation, synthesis, conclusions, and presentation and she explained it with the help of various do's and don'ts which students should focus on while working on their dissertation. Detailed guidance was provided by her about writing thesis book. Giving reference to previous semester's lecture on plagiarism she stressed upon it saying students need to stay away from plagiarism and write the original content. Lecture was concluded by Prof. Ajita Deodhar by summarizing the session and thanking Prof. Tejashree for reconnecting with students and sharing her experience with them which is going to be very effective in the entire journey of their thesis.



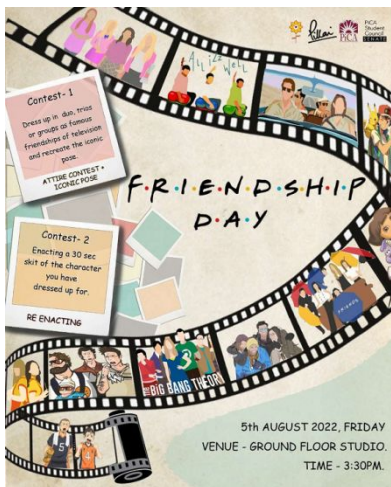
## POPULAR DESTINATIONS FOR STUDYING ABROAD

27th JULY, 2022

A guest lecture was held with the intent to help students understand the logistics and functioning of an incubation center. The main aim was to provide insights to students on this topic by giving them a chance to interact with professionals of this field. The lecture started by a presentation which was given Dr. Priam Pillai and was followed by group discussions and doubt-clearing sessions. Dr. Priam Pillai explained the various stages involved in developing an idea to MVP (Minimum Viable Product) and also explained in detail about all stages involved in incubation process. The lecture also had a QnA session with Dr. Priam Pillai and Prof. Celina Joy. Overall, the lecture was successful in bringing clarity among students regarding the set-up and functioning of an incubation center.







5th AUGUST, 2022

On account of friendship day, a costume event was organized at Pillai college of Architecture. Students of all the batches from 2nd to 5th year came forward in various avatars; each marking a friendship bond they adored. The event opened with a highly applauded act of minions by 2<sup>nd</sup> year students. One could spot various embodiments of friendship from Riverdale, The Bold Type, and Euphoria to Kuch Kuch Hota hai, Money heist, and Scooby-Doo. The college faculty too graced the event with their presence along with principal Dr. Sudnya Mahimkar. The celebration set a benchmark for the friendship bonds that this college; as well as the course imbibes along with the talents that students showcased.

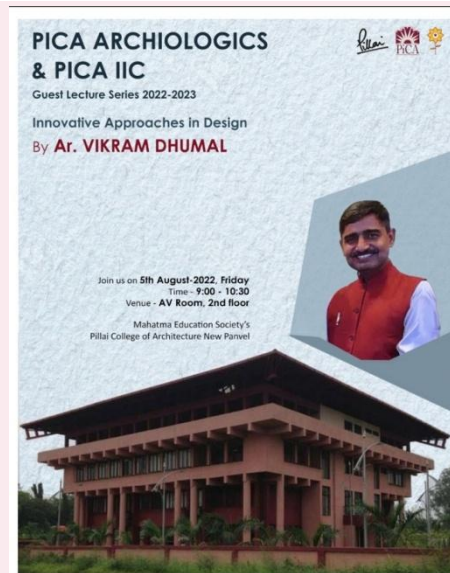


## GUEST LECTURE

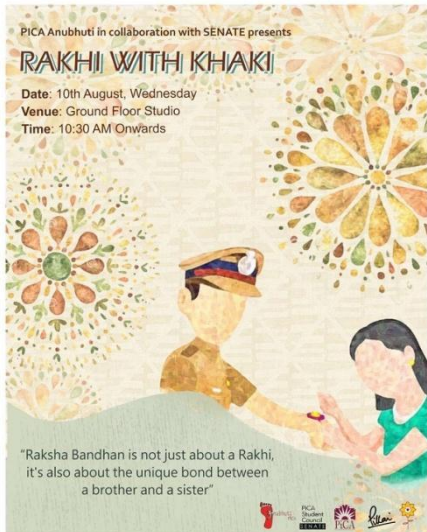
## INNOVATIVE APPROACHES IN DESIGN

5th AUGUST, 2022

A guest lecture was held by Architect Vikram Dhumal in which the presentation mainly highlighted the designing of the Sports Complexes with special reference to Ramseth Sports Complex with the intent to help students understand the logistics and functioning of an incubation center. Through a different range of projects right from structural to the urban scale, Architect Vikram gave emphasis on how the different projects are very contextual along with his life experiences related to them. The presentation also chalked out a list of challenges the project conductors faced during the intervention process at several sites and briefed on how the holistic dimension was given in the process and how the interdisciplinary team works helped in resolving the issues. The session, towards the end, opened up with an interactive question answer session where in faculty and students shared how the presentation was an eye opener for them.







## RAKHI WITH KHAKHI 10th AUGUST, 2022

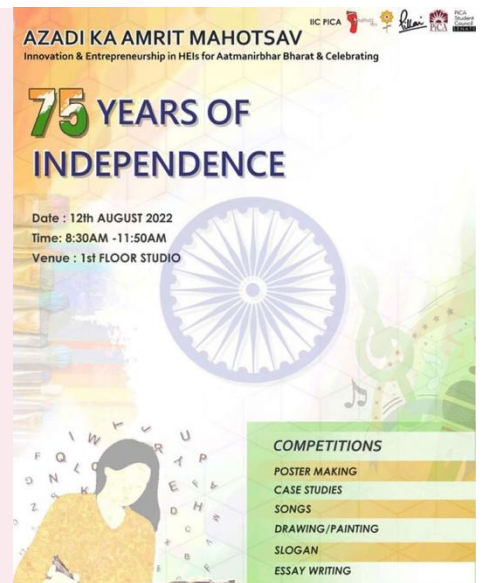
On the auspicious occasion of Raksha Bandhan, Pillai College of architecture organized an event of 'Rakhi with Khakhi'. Raksha Bandhan symbolizes protection, and who better to celebrate this bond than with inspectors of our police force who swear our protection as their duty? The event started with greeting our guests, SI Subhash locates, API Vitthal Pisal , API Sameer Chaskar, Police Inspector Naik Mhatre, Head Constable Sudarshan Sarang, and Head Constable Kuvar. The occasion advanced with a welcome speech by API Sameer Chaskar where he mentions the significance of Raksha Bandhan followed by SI Subhash Kokate who shed light on the functions and importance of the police department.



## COMPETITION

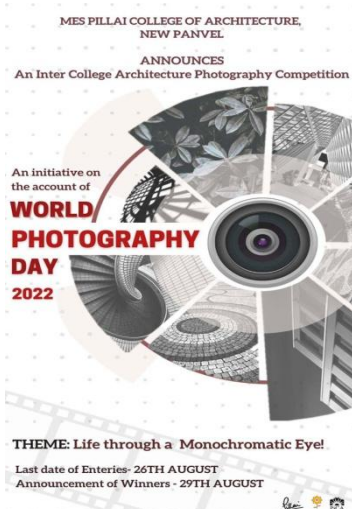
### AZADI KA AMRIT MAHOTSAV POSTER MAKING COMPETITION 12th AUGUST, 2022

Azadi Ka Amrit Mahotsav is an initiative of the Government of India to celebrate 75 years of progressive Independent India. All institutes were urged to conduct the same by holding competitions ranging from poster-making, drawings, paintings, and slogan writing to essays and submitting the responses. Commemorating this prestigious day in India, Pillai College of Architecture held a competition by engaging the entire vertical of PiCANS and it was exhibited for panel judgment.



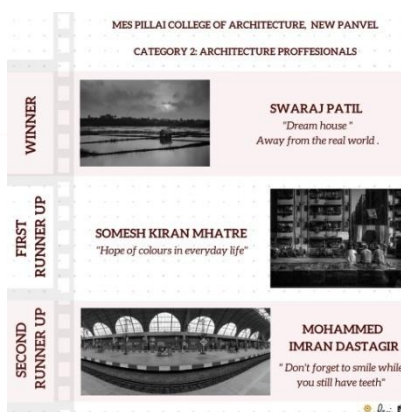


# COMPETITION



## WORLD PHOTOGRAPHY DAY 19th AUGUST, 2022

On the occasion of World Photography Day, To solemnize this day, Pillai College of Architecture held a photography competition by engaging Architecture students from all colleges of Navi Mumbai and Mumbai. "Life through a Monochromatic Eye" served as the topic. Through this competition, we appreciate the amazing talent and passion people share for photography. The competition was supervised by Prof. Tushara Kaliyath and the top 10 entries were shortlisted by our Judges, Mr. Mangesh Mhasavade and Mr. Aslam Saiyad. The winners were congratulated by uploading their winning submissions on PICA's Instagram page.

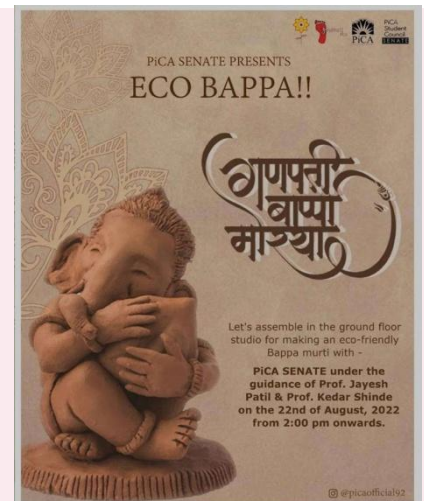


## CULTURAL EVENT

### ECO-BAPPA WORKSHOP

22nd AUGUST, 2022

To celebrate the festival of Ganesh Chaturthi, the student council of Pillai College of Architecture organized a clay workshop where the participants were given the opportunity to make clay idols of Ganapati. The entire workshop was conducted under the guidance of Prof. Jayesh Patil and Prof. Kedar Shinde. The session hence also began with a brief demonstration on the basic steps and techniques by Prof. Jayesh Patil for making the idol. The workshop was attended by students, faculty members along with the principal, Dr. Sudnya Mahimkar. The workshop finally ended with the display of the models made by all of the participants.





# 3 O'CLOCK STUDIO



## EPISODE 1 6th SEPTEMBER, 2022

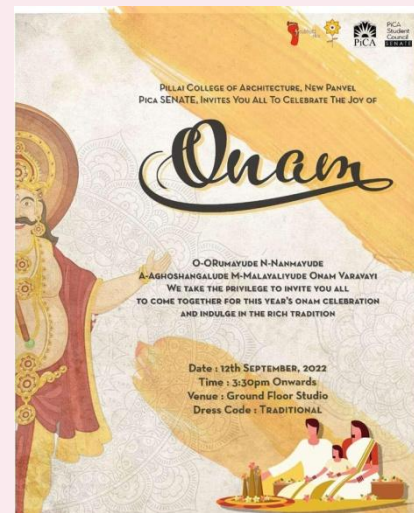
3'O clock studio is a special studio conducted for the students, where dedicated students from the 4th year's batch volunteered to give a brief presentation on their Architectural Design portfolios and hence gave way to a creative and informative learning session for their juniors. The volunteers from the 6th semester that participated in this event are Mr. Faiz Kasu, Miss Shrivya Karuturi, and Mr. Shivam Patil, whom each took turns carrying out the studio presentations. This studio also aimed at setting an example for the students in the audience on how to informatively and represent their designs and ideas to the audience while making a presentation.



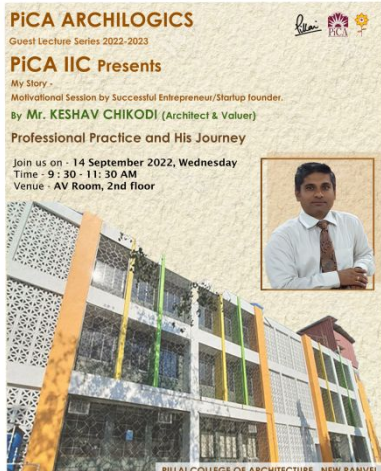
## CULTURAL EVENT

### ONAM CELEBRATION 12th SEPTEMBER, 2022

To grace the occasion of Onam, a festival that brings together all communities in Kerala, the student council conducted an event for Onam. The event comprised of a Pookalam competition which is an activity of this festival famous all over India. The event was inaugurated by the lighting of a lamp by our Principal, Dr. Sudnya Mahimkar, accompanied by a few other faculty members too. The event opened with a neat narration of learning about the story of how Onam came into existence. The event was celebrated with dance and singing performances. The student council also celebrated all the teachers and expressed their gratitude with a gift token. Toward the end, everyone shared a great laugh while answering some quiz questions on based on the festival of Onam!







## PROFESSIONAL PRACTICE AND HIS JOURNEY 14th SEPTEMBER, 2022

A guest lecture was held by Ar. Keshav Chikodi in which he talked about his experiences in a variety of projects through his journey. The presentation mainly highlighted his Professional Experience and Knowledge to the students on the topics like Professional Practice, Internship (Skills Required), Job/ Entrepreneurship / Start-up. He discussed about the procedure of a project from approval to completion, the scope for further education. The takeaway from his discourse was that architects must be proud of our heritage and have the capability to do better.

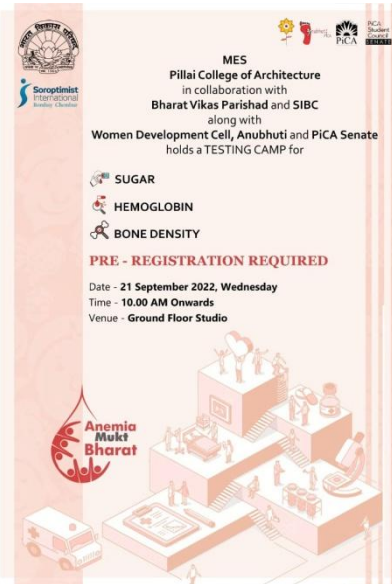


## 3 O'CLOCK STUDIO

### EPISODE 2 20th SEPTEMBER, 2022

3'O clock studio is a special studio conducted for the students, where dedicated students from the 5th year's batch volunteered to give a brief presentation on their Architectural Design portfolios and hence gave way to a creative and informative learning session for their juniors. This studio also aimed at setting an example for the students in the audience on how to informatively and clearly represent their designs and ideas to the audience while making a presentation and this was rightly presented by Miss Swati Singh. The volunteers from the 5th year that participated in this event were Mr. Alvin Paul, Miss. Rutuja Devadkar and Miss. Subiksha Rajagopalan, each took turns to carry out the studio through their part in the presentation.





## TESTING CAMP – RANDOM BLOOD SUGAR, HEMOGLOBIN & BONE DENSITY 21st SEPTEMBER, 2022

PICA signed a MoU with Bharat Vikas Parishad, Panvel for a period of 3 years with the intention to serve various sections of the society. Under the above MoU activities, MES Pillai College of Architecture, New Panvel in collaboration with Bharat Vikas Parishad and SIBC along with Women Development Cell, Anubhuti, and PiCA Senate conducted a testing camp for measuring the random blood sugar, hemoglobin, and bone density of female architecture students and staff of all departments in the campus. Dr. Kirti Samudra (M.D. Physician and Diabetologist) along with her lab technicians was available for the entire time during the testing camp. She prescribed medicines to all females depending on the deficiencies which their test results showed. This camp observed several extreme cases of low hemoglobin values and high blood sugar levels. The bone density of most female staff (above 35 years) indicated Osteopenia. These cases were counseled by the doctor and medical and diet guidance was provided to them. Overall, the camp was a successful initiative in creating awareness among females regarding their health parameters.

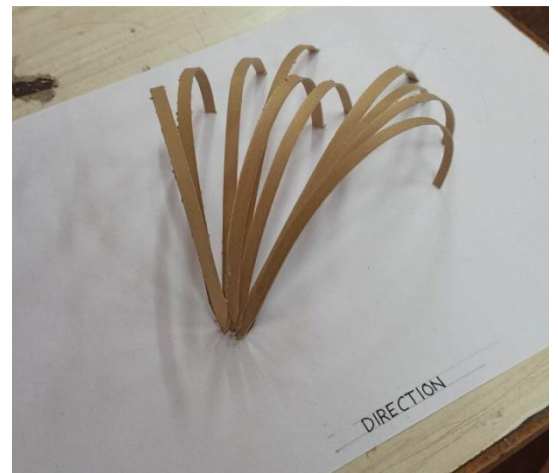






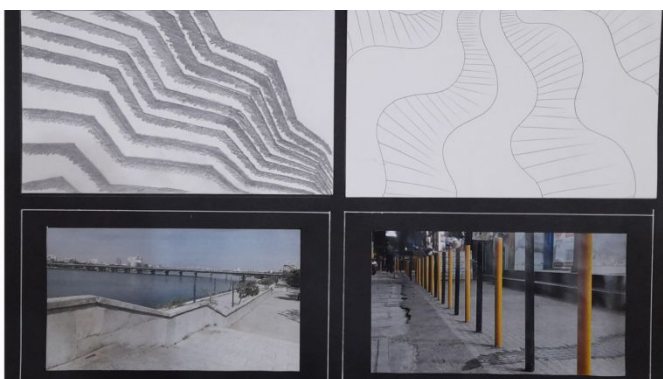
**RADHIKA DALVI**  
SEM I, BASIC DESIGN

To a layman, design is just about making things look beautiful. Design actually is art as well as science, it's much more than making things beautiful. Design though seems to be simple, skill is vast, deep and multifarious. It has a wide scope almost in all fields of life. Concept is the pillar of design. The principles of art represent the usage of elements of art to create an effect and convey the concept; the artists' intent. The principles of design are balance, contrast, focal point, rhythm, harmony, repetition. The use of these principles help us determine whether the work is successful, whether or not its completed. These principles are intertwined and use of one often depends on another. "Design can be art. Design can be aesthetics. Design is so simple, that's why it is so complicated."- Paul Rand Graphic Designer.

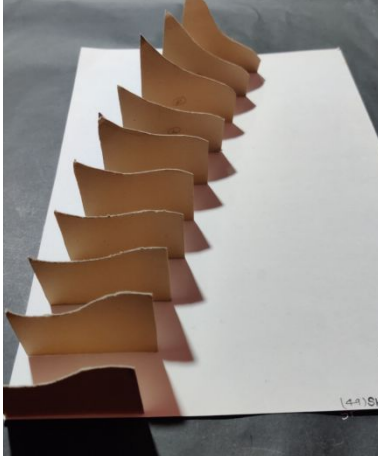


**ALAN PINTO**  
SEM 1, BASIC DESIGN

The hidden one in a person's mind is a DESIGN, design is thing which is been freely done, but if under certain parameters like theories and principles the design will be understood to the world which gives a meaning and the deserving value to the design, SO JUST DESIGN







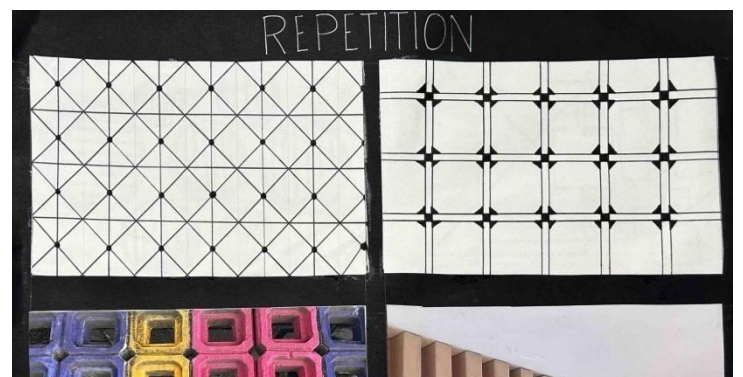
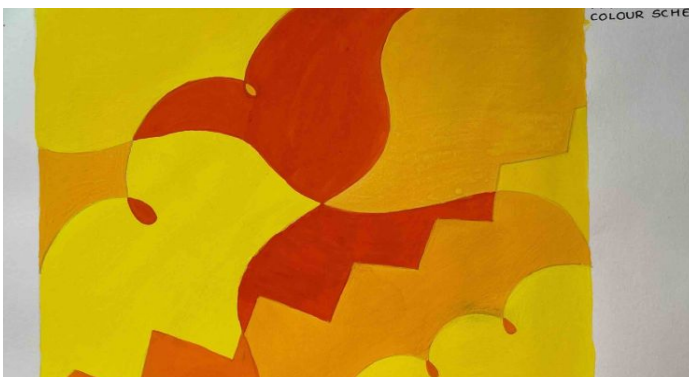
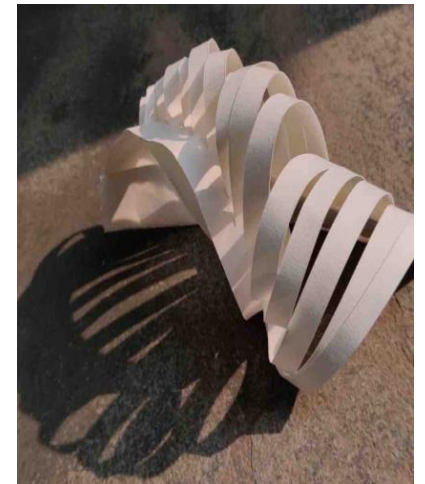
## SHRUTIKA PATIL SEM I, BASIC DESIGN

Basic design subject is like maths to me ... it's easy and interesting when you understand it and stress giving when you don't. In this subject, I learned to give form to a single paper by using the reference of things. I observed different textures of natural as well as man made things by using them I made abstract composition which was my favorite assignment from all of them. Learning principles of design gave me a new perspective of looking at structures which was a unique experience for me. It made easy to visualize structures with the help of principles while making models. Overall this subject changed my whole perspective about looking at structures.



## YUTIKA TAWDE SEM 1, BASIC DESIGN

My Basic Design portfolio has helped me understand how to visualize objects in various ways to create new forms. The first module which was about the paper sculpture model taught me how a single piece of paper can be turned into a freestanding form just by making cuts and folds. This gave me a new perspective of experimenting with paper. My next module which was about the formation of textures was a really fun assignment where I explored onto so many new textures which goes unnoticed in my day to day life. The assignment of Principle of Design gave me an opportunity to showcase my love for photography by adding onto the various principles of design. The next assignment which was about color theory brought me more closer to colors and their tints, hues and shades and showed how colors can bring so much life into an object. The entire AD portfolio made me explore so many things and was very interesting to do.

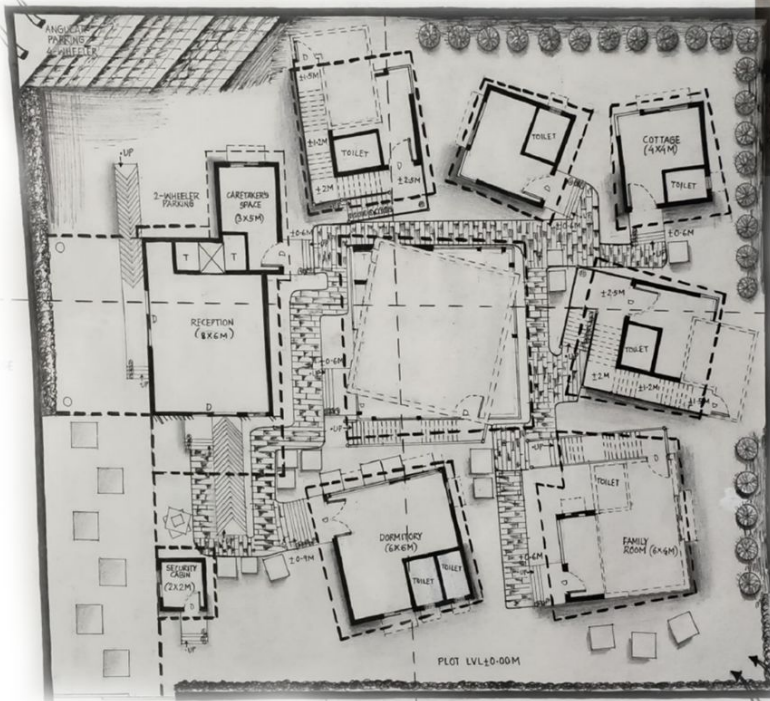




## JILL MEHTA

SEM 3

Architecturally, the Rubik's Cube-themed resort is designed to resemble the actual puzzle toy. The facade of all structures resemble one or the other element of a Rubik's cube. Every structure reflects one property or the other of the Rubik's cube like disintegration, colors, assembly, stacking etc.



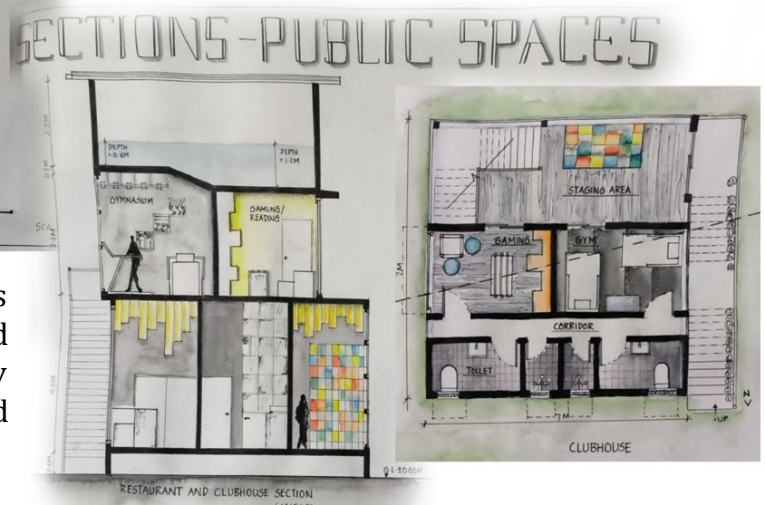
Overall, the architectural design of the Rubik's Cube-themed resort aims to create a fun and immersive experience for guests, with every element of the design evoking the joy and excitement of solving a Rubik's Cube.



The interior of each building continues this color scheme, with walls, floors, and ceilings in different colors arranged in a pattern to create a cohesive design. The furniture inside the cottages, cabins, and administration building is also designed with a playful and colorful theme, adding to the fun and vibrant atmosphere. The resort's layout is also designed to encourage exploration and interaction.



With outdoor areas featuring large Rubik's Cube sculptures and interactive games for guests to enjoy.



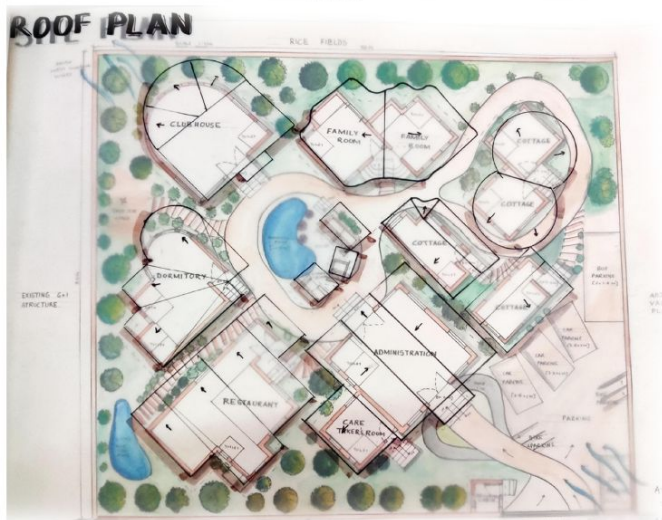




## ATHARVA MHATRE

### SEM 3

The site was located in Karjat, which lies in the warm and humid climate region. The site was surrounded by Sahyadri mountains on its east side. The first thing when I visited the site was the major airflow throughout the site, this is from where I developed the concept of my retreat "Airflow".



Further studying and adapting the properties of airflow in my site planning.

Laminar flow of air which has single direction, used to keep the entrance of every structure in the same direction.

Turbulent flow of air which has no specific direction to it is used in planning of the pathways within the site.

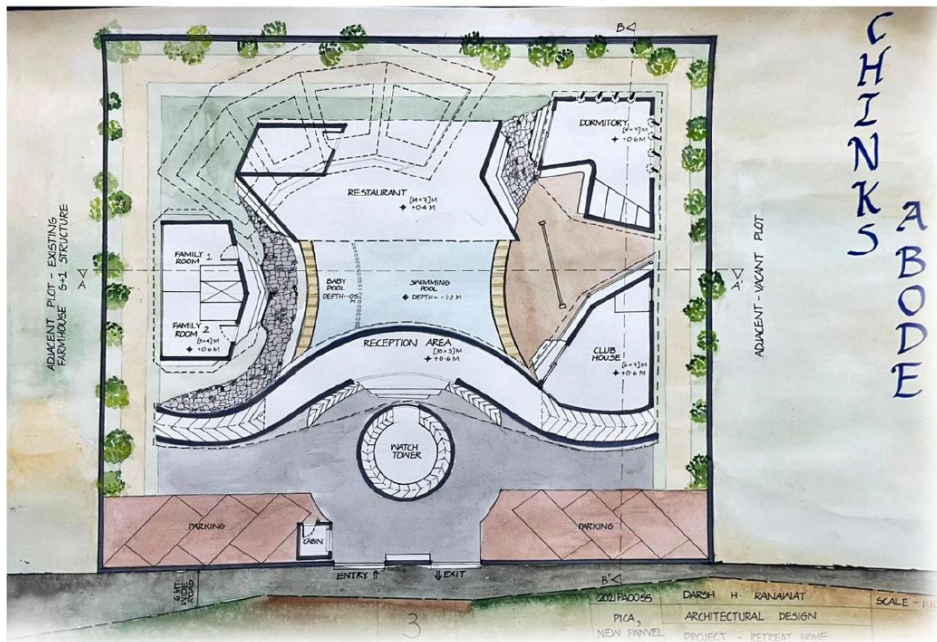
Airflow has curved path therefore :

Open curve for public spaces

Closed curve for private spaces which can be seen in my site plan using various such properties of curves in my design is the highlight of the structure.

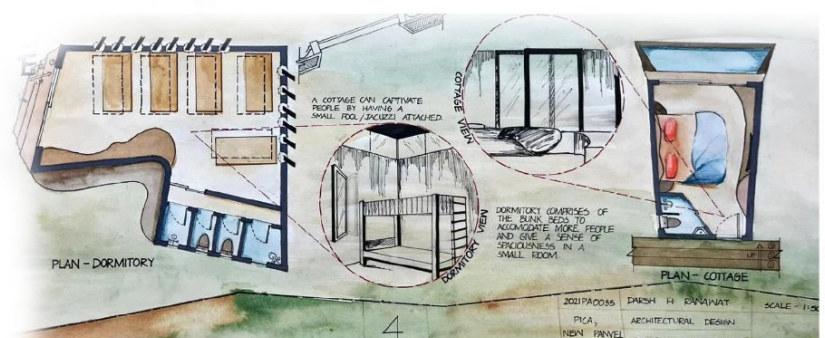
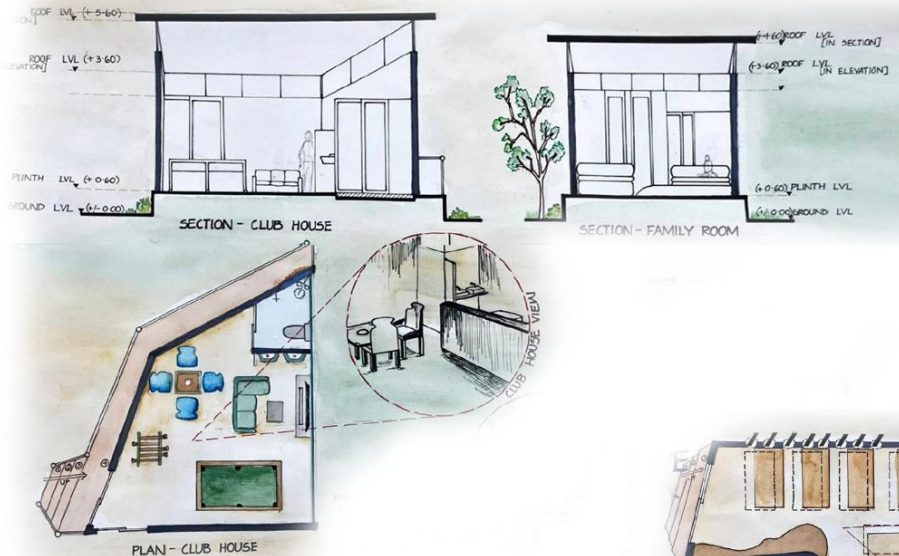




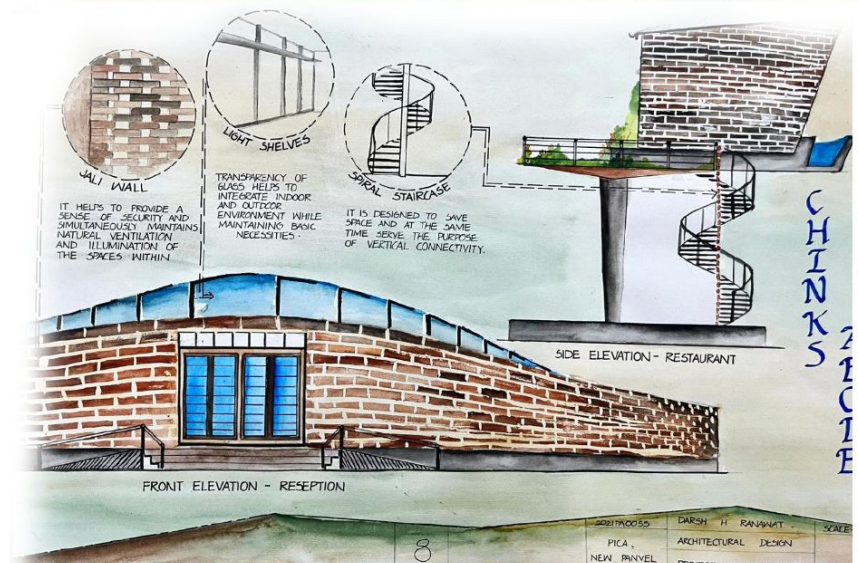


## DARSH RANAWAT SEM 3

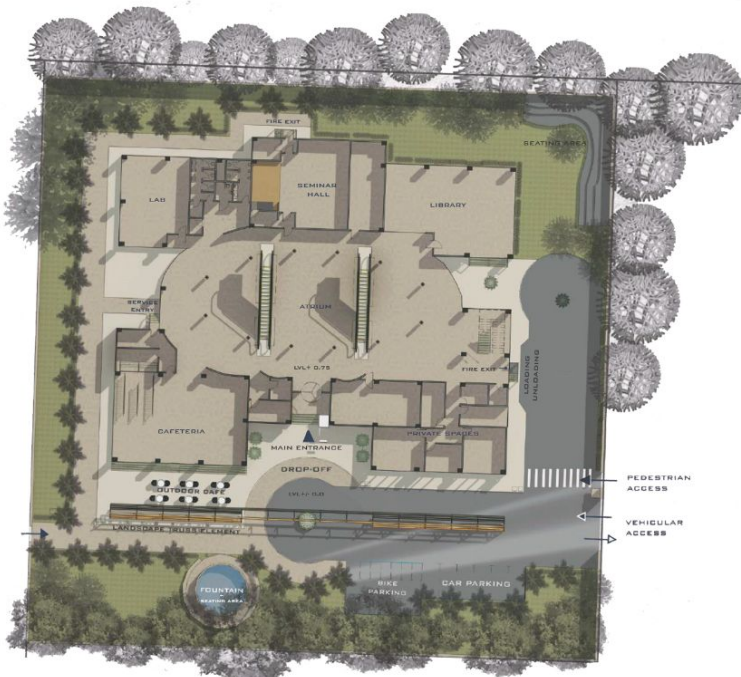
A resort in Karjat suits perfectly well for the highly situated location. Karjat, being at a higher location than the rest of the cities makes me think of the amount of sunlight that it achieves. Interestingly, taking this sunlight in rather than avoiding it is where my concept lies, "Apertures". Making use of different types of apertures to bring in natural daylight into the structures, playing with light and shadow effects makes it interesting in perspective of the incoming travelers. Moreover, every structure has been designed like that of an eye, i.e. it brings in a bigger perspective from a smaller point, which resembles just like my concept.



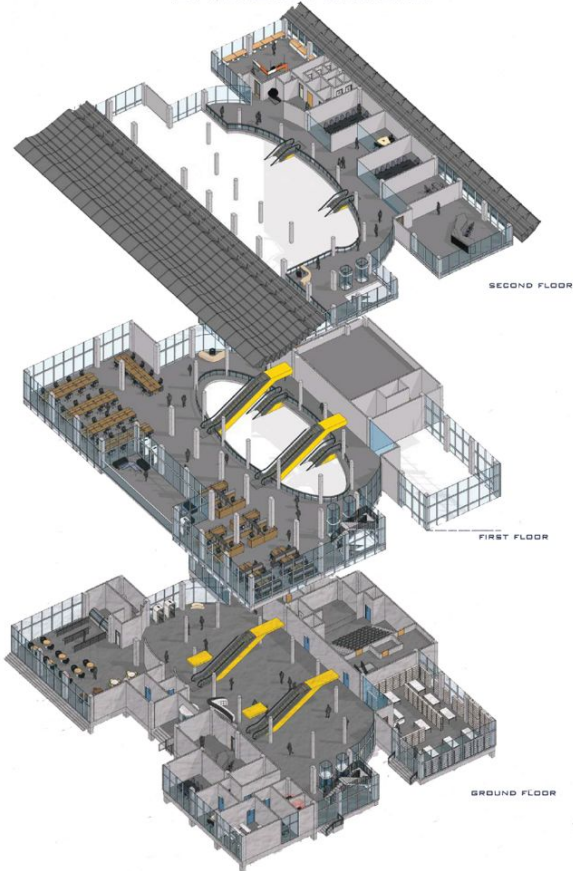
Keeping the swimming pool at the center helps me create a micro climate and thus the structures remain cool even when I bring in maximum daylight into the picture. As converse as the statement may sound, the resort plays admirably with the reception being throughout the length at the entrance which brings in curiosity in the customers to see what's beyond! The watch tower then just adds to the cherry on the cake.



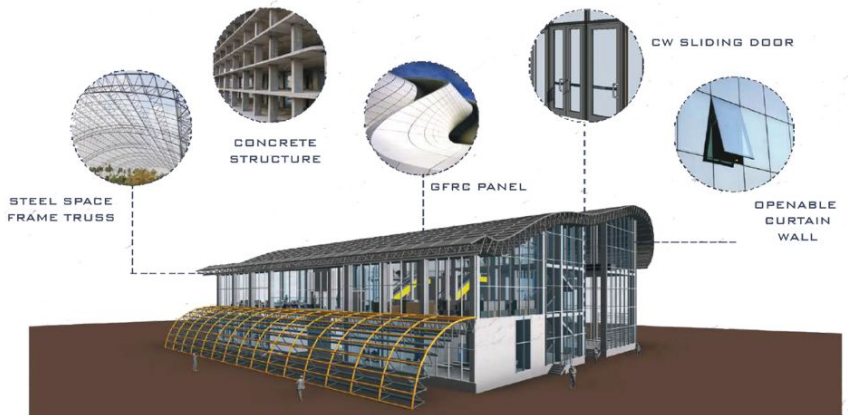




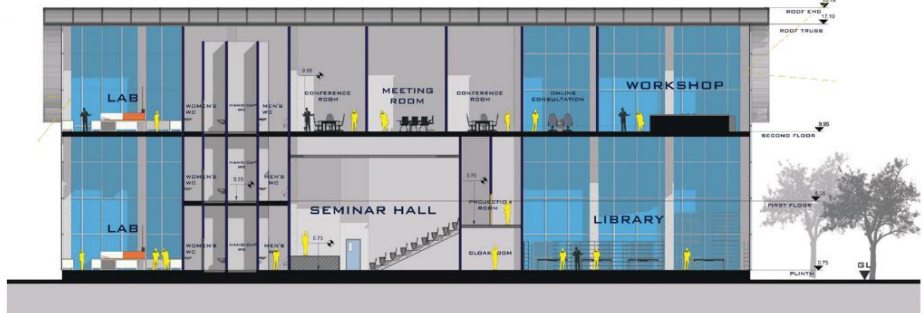
SYMBIOSIS GROUND



EXPLODED VIEW



CONSTRUCTION TECHNIQUES AND MATERIALS



SECTION BB'



SECTION CC'

## “ VISHNU RAJ Sem 5

Novus Incubation Center is a futuristic architecture that will resonate with its own identity through time. It is based on concepts of dynamism, parametric, technological innovations and sustainability. The above concepts are supported by regulated space planning and exploration of form that best suits the environment. Futuristic architecture attracts viewer attention through contrast within context which will eventually give more exposure to the building. With the materials becoming more lighter and construction technology being more advanced, the form of building is highly expressive. To conclude, Novus Incubation Centre is an expression where structures serves the purpose of more than just a building.

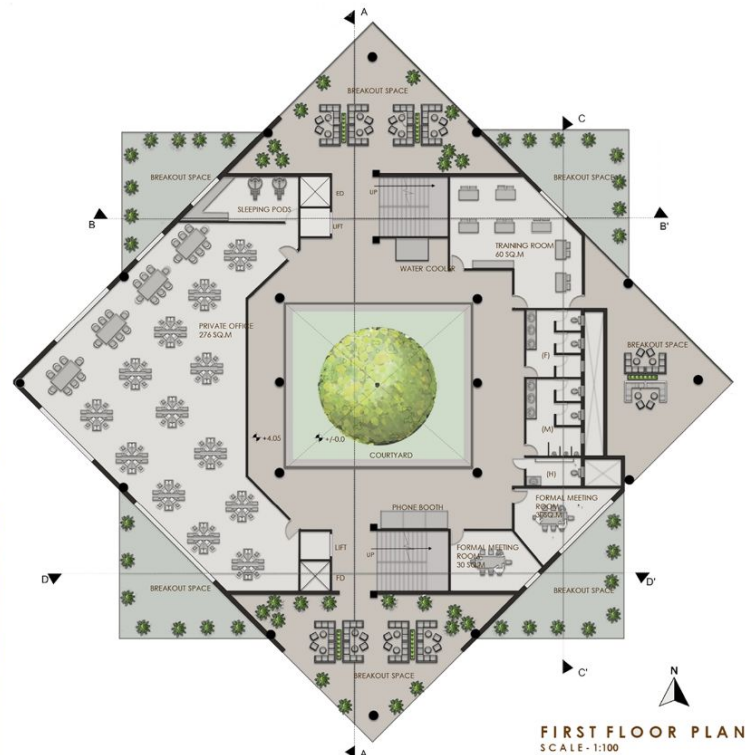




“

## NAMITA SUDHEENDRAN Sem 5

Incubation Center requires a dynamic approach that serves as a launch pad for next generation of entrepreneurs, investors and innovators. Dynamic architecture combines the best features of science and technology in it. The intention of creating a dynamic incubation center was to facilitate a adaptive structure that gives importance to site conditions, green spaces and energy efficiency. The form is the main highlight of the structure which is an amalgamation of sense of dynamism and modernity. The form implies various breakout spaces that connects the structure to the nature through vertical greening of the structure and visibility of the surrounding context.



FIRST FLOOR PLAN  
SCALE - 1:100



SECTION AA'



TENNIS COURT



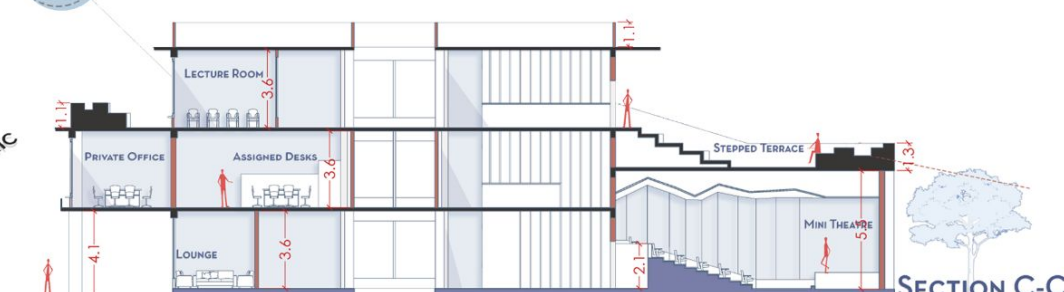
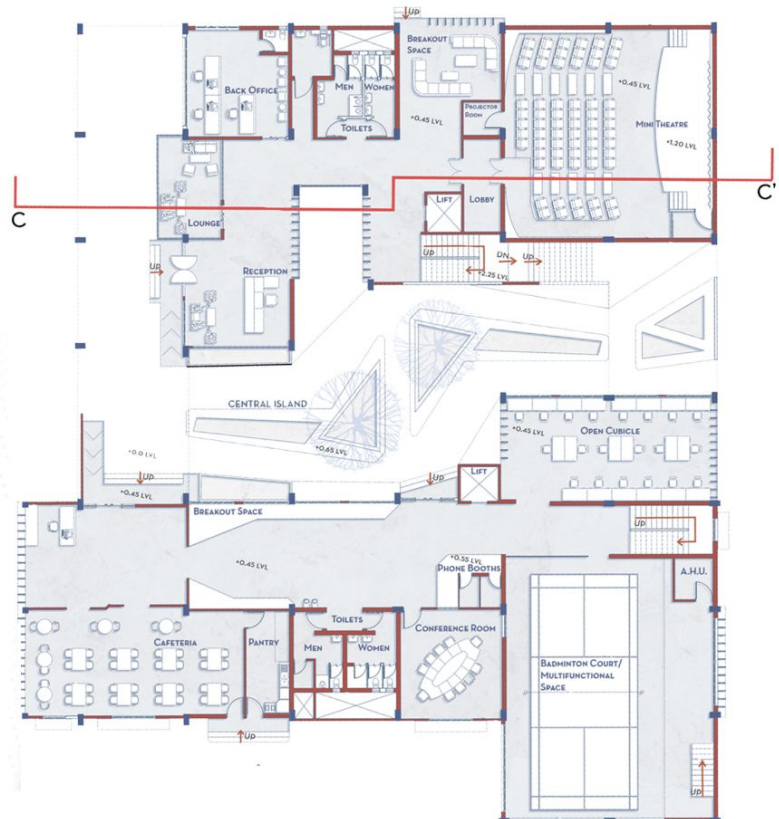
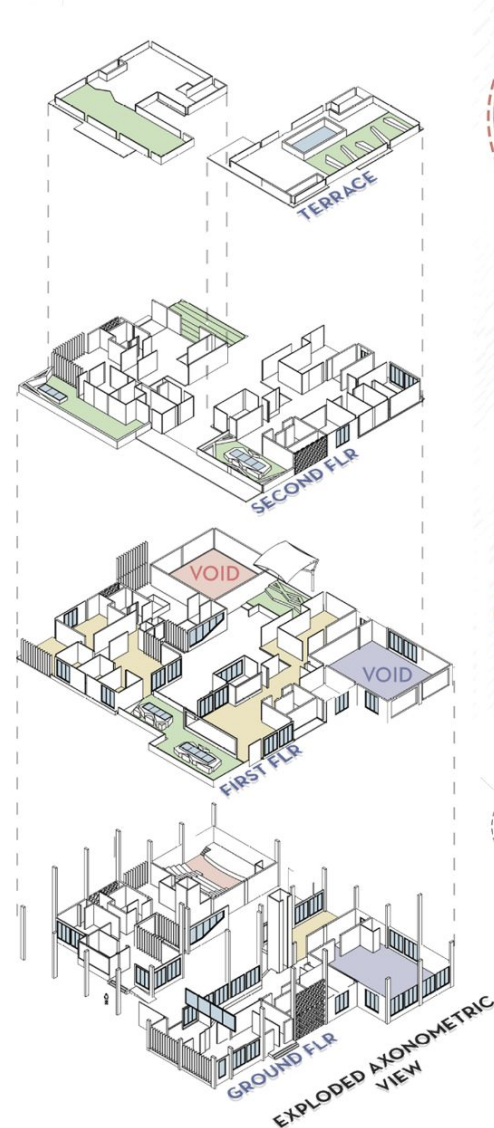
“

**ABHISHEK PISAT**

**Sem 5**

PARKING

Incubation center is a launch pad for various infant startups of the new generation. The idea of an Incubation Centre arises from the basic concept of rawness and flexibility. The great artist Leonardo da Vinci quoted, “Simplicity is the ultimate Sophistication.” The merging of various elements which keeps the design simple and sophisticated at the same time. Applying the same concept in design by assigning multi-functionality to a space makes a simple space sophisticated. Using the same space for various activities for multiple users increases the various social aspects, thereby increasing productivity of the startups. The structure has to act like one whole working space. To create that illusion, the structure has been split into two separate buildings. It connects and disconnects on various levels to allow flexibility throughout the structure.



SECTION C-C'

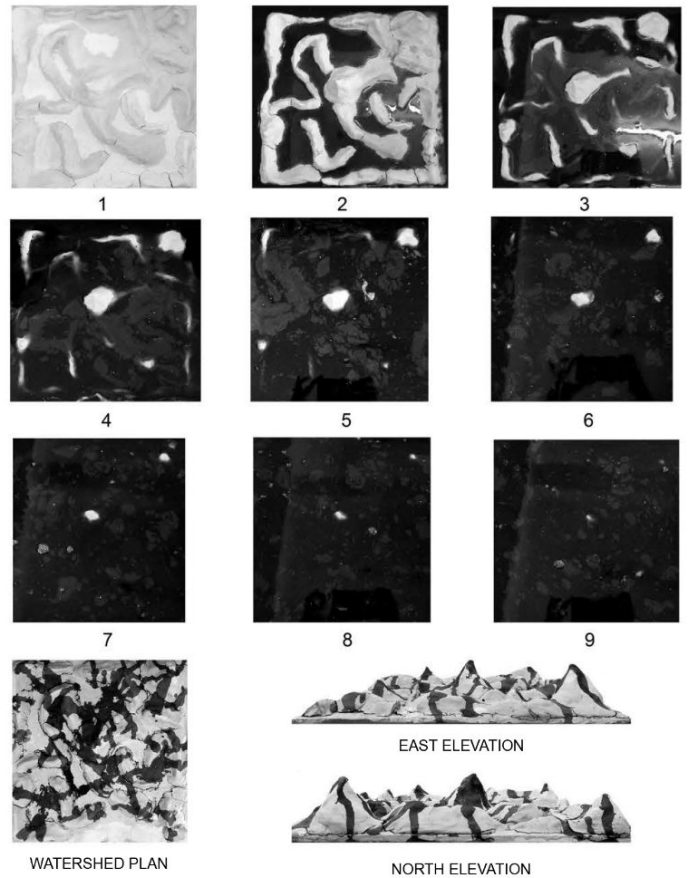
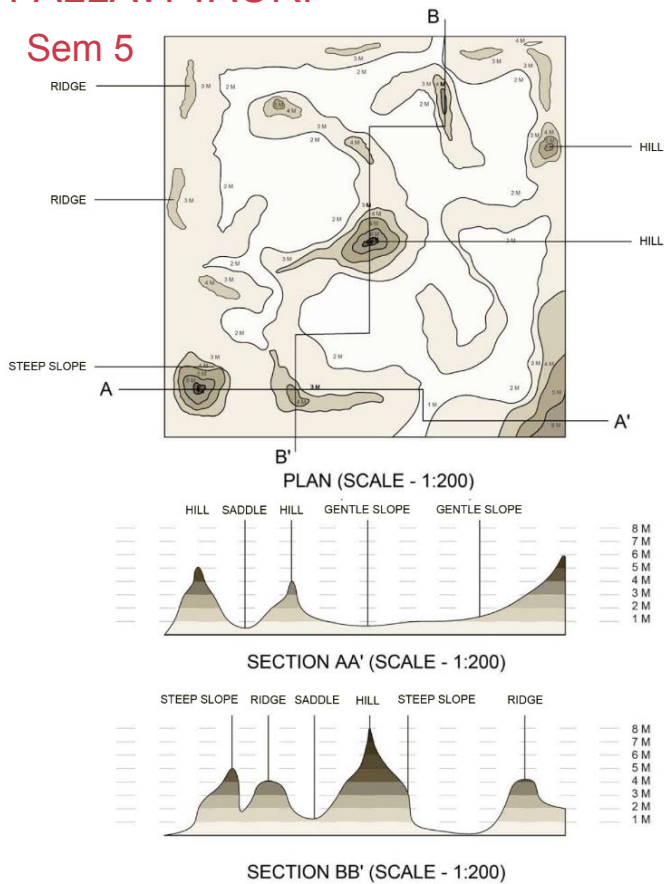


# LANDSCAPE DESIGN PORTFOLIOS

Landscape design subject for 3rd years involved assignment for understanding contours and contour maps . This indulged students with an activity in which students placed their contour models made from clay in a tub filled with black water .The following contour model and contouring procedure helps to understand the formation of typical land features and contour forms.

## PALLAVI TAORI

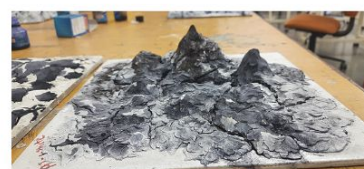
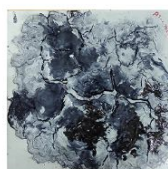
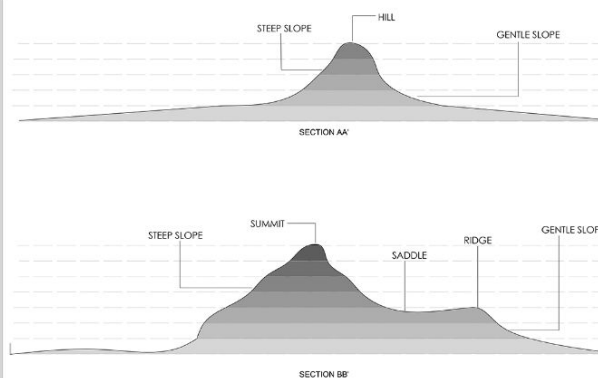
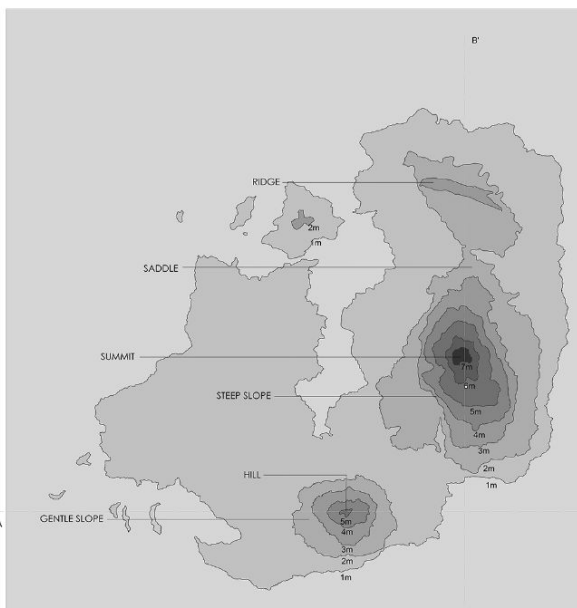
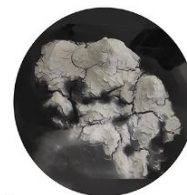
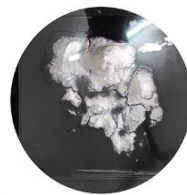
Sem 5



ANALYSIS:  
The following contour model and contouring procedure helps to understand the formation of typical land features and contour forms.

The model has steep slopes, gentle slopes, summit, hill, saddle and ridge as represented in the graphics below. A steep slope is identified by the very closely spaced contour lines and conversely, widely spaced contours represent very gentle slopes.

The part where it has steep slopes forms a well-defined summit while the hill is tending to be rounded.



## ROSHANI TIWARI

Sem 5



## Terminologies in Landscape Design: Sketches

ROSHANI TIWARI

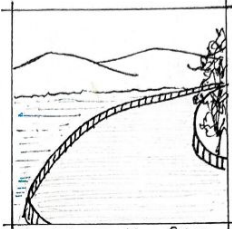
Sem 5

1. URBAN SQUARE



Open public spaces which reflects the cities' identity & cultural bg.

2. PROMENADE.



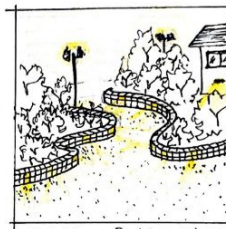
A wide path for leisure walks.

5. GREEN BELT



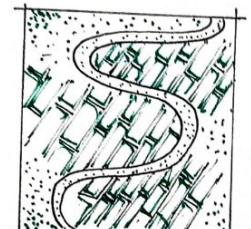
Natural, undeveloped, agricultural lands that surround urban areas.

6. DIRECTION OF LIGHT & ITS EFFECT ON LANDSCAPE DESIGN



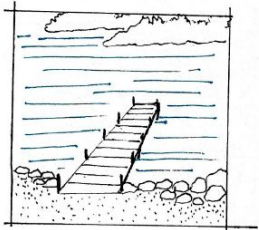
Spirit of the place is enhanced, illuminated & directed.

17. PARKING DESIGN



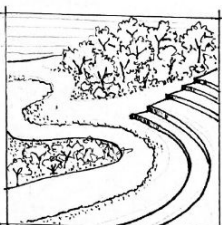
Landscaping of parking areas.

3. WATERFRONT



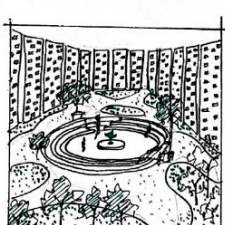
A part of a town or an area that is next to the sea, river / lake.

4. LANDSCAPE URBANISM



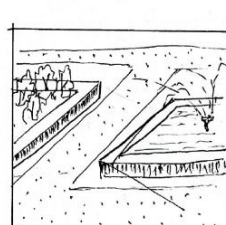
A complex structure which is a result of the interaction b/n human & environment.

7. GENIUS LOCI IN LANDSCAPE DESIGN



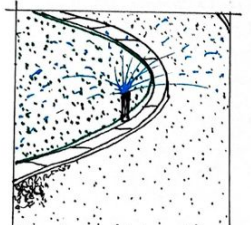
Spirit of the place.

8. OPEN SPACE SYSTEMS



Spaces that work in an open surrounding.

19. IRRIGATION IN LANDSCAPE DESIGN



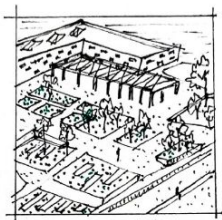
Irrigation to maintain the landscape & promote rainwater harvesting, etc.

9. CULTURAL LANDSCAPE



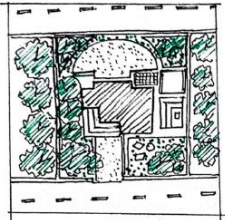
Landscapes that are affected, influenced or shaped by human involvement.

10. INDUSTRIAL LANDSCAPE



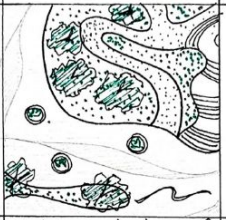
Landscape of large-scale industrial infrastructures.

13. RESIDENTIAL LANDSCAPE



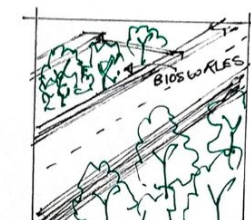
Landscape design of Pvt. residential properties.

14. RECREATIONAL LANDSCAPE



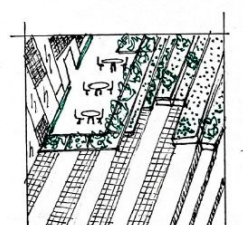
Landscape design of recreational spaces like gardens, pathways, etc.

18. WATERSHED APPROACH IN LANDSCAPE



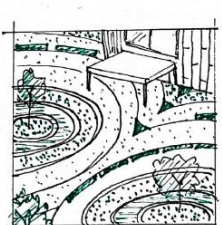
To gather rainwater via landscape design

11. COMMERCIAL LANDSCAPE



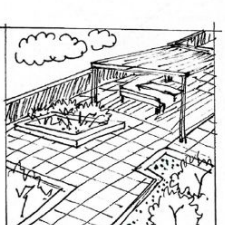
Landscape design for open sitouts, water bodies & parking

12. INSTITUTIONAL LANDSCAPE



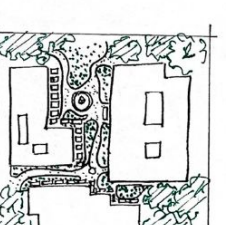
Landscape design of colleges, universities, etc. campuses.

15. TERRACES IN LANDSCAPE



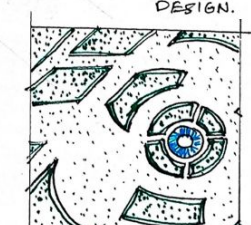
Landscape design in levels or on terraces.

16. PODIUM LANDSCAPE



Communal outdoor space serving adjacent buildings.

20. IDEA OF AESTHETICS IN LANDSCAPE DESIGN.



The arranging & modifying of features & elements in a design.



## Terminologies in Landscape Design: Sketches

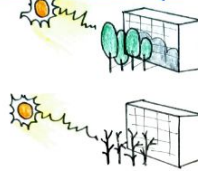
TANVI SONAR

Sem 5

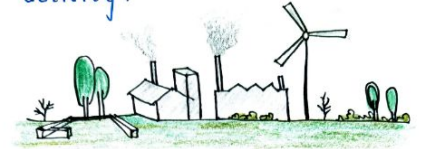
1.) Promenade - a controlled sequence journey through a building that can act as an architectural device.



4.) Direction of light and its effect on landscape design.



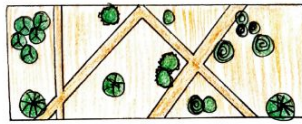
7.) Industrial landscape - landscape modified by effect of human activity.



2.) Water front - A part of town that borders sea, lake or river.



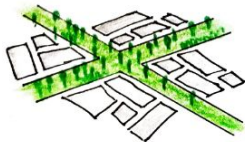
5.) Open space system - open space between the structure and landscape.



8.) Commercial landscape - landscape have planning and maintenance of aesthetically appealing outdoor business space.



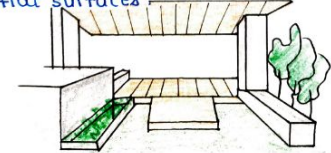
3.) Green belt - area of open land around a city, on which building is restricted.



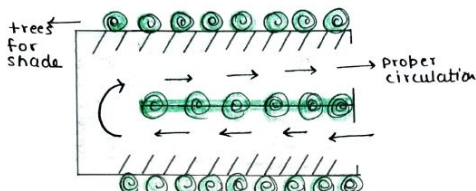
6.) Cultural landscape - visible human imprint on landscape, with imprint of culture.



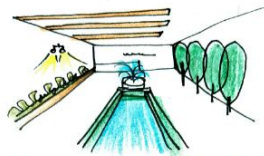
9.) Terrace in landscape design - raised flat surfaces



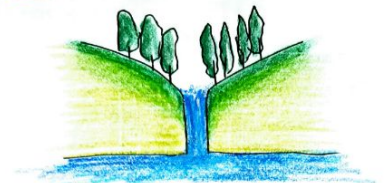
10.) Parking design - circulation seq. for cars



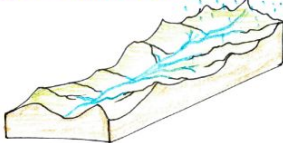
13.) landscape designing aesthetic



16.) Natural water bodies



11.) Watershed approach in landscape design



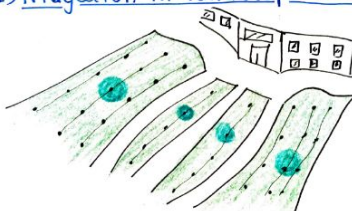
14.) Bonsai - growing & training miniature tree.



17.) Woods



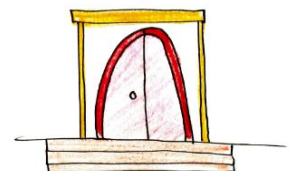
12.) Irrigation in landscape design



15.) Amphitheater -



18.) Entrance Portal



19.) Natural patterns in landscape



20.) Grasslands

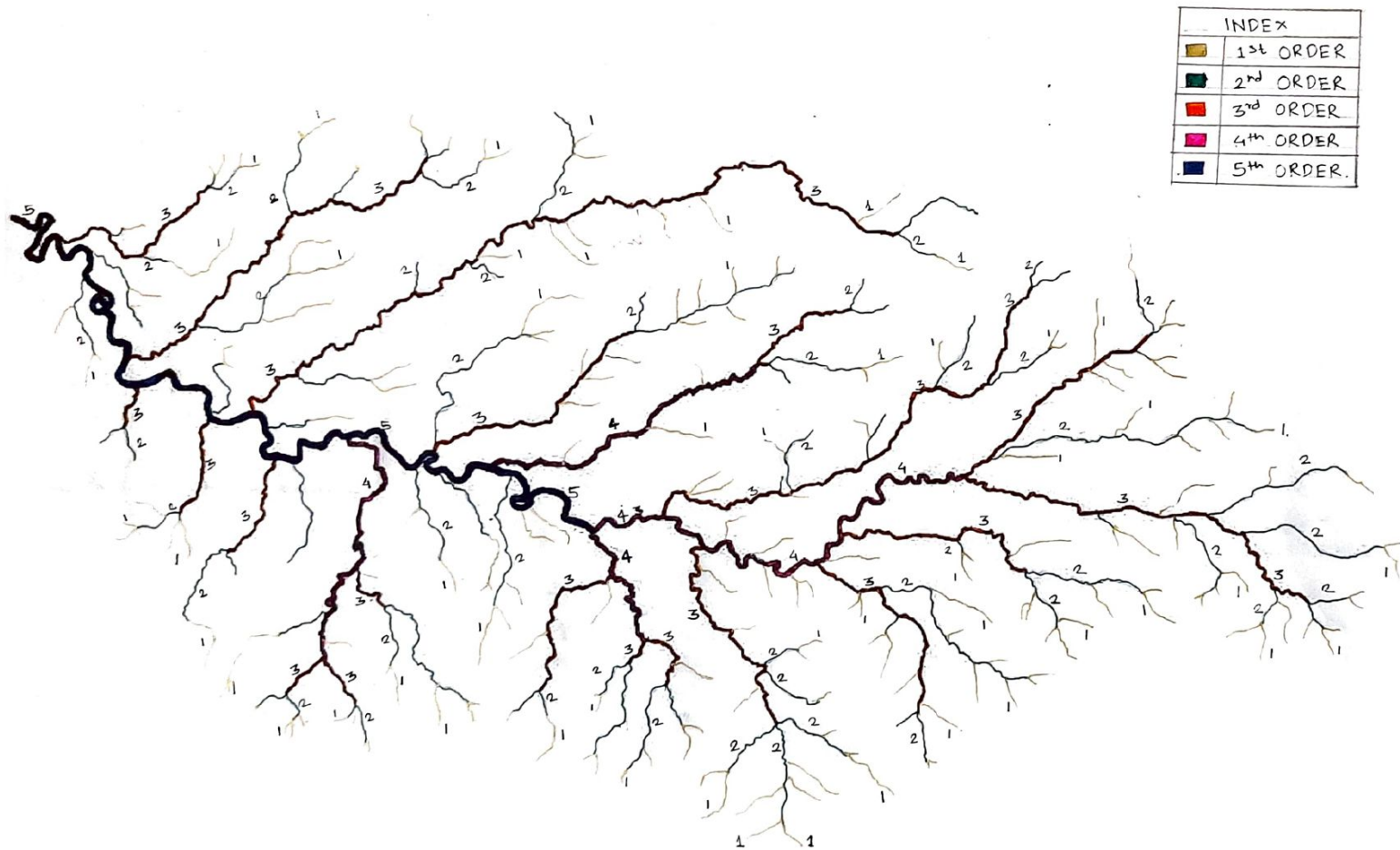




## Watershed: Hydrology Stream Order

NILESH SHINDE

Sem 5

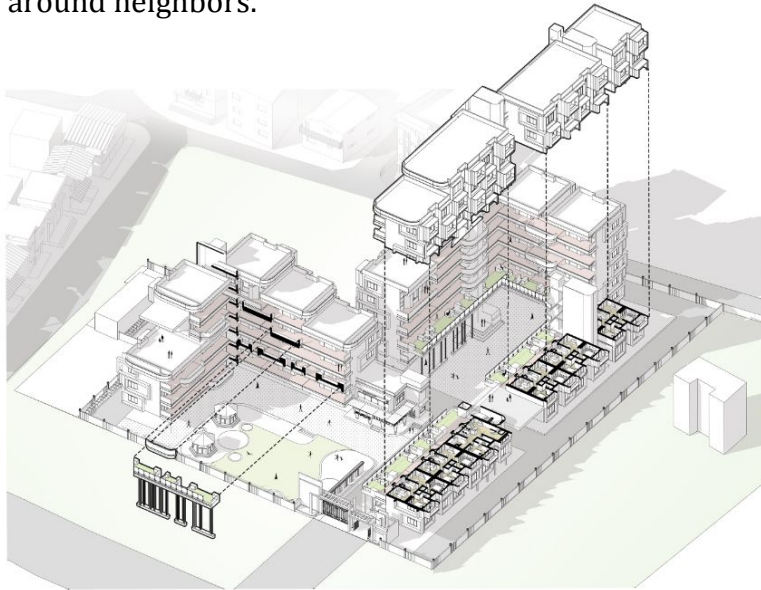
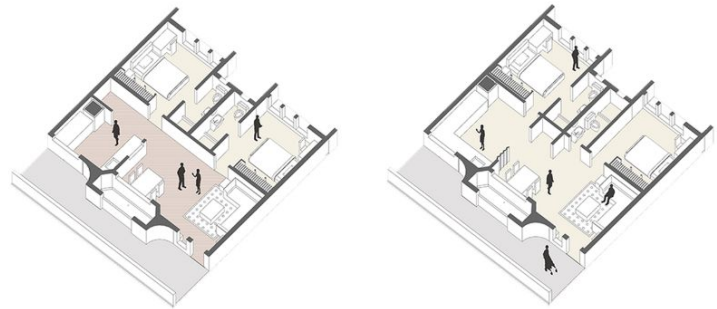




## SHUBHAM MOGHE & SHUBHAM PRASAD

Being an industrial housing project the motive here was to create a co-living environment between the employees and their families. It is a transient community yet, they are familiar to each other as they spend most of their time together. In such system of working, usually a hierarchy is seen between the employees and to avoid this we proposed a co living concept which has been broken down into three stages.

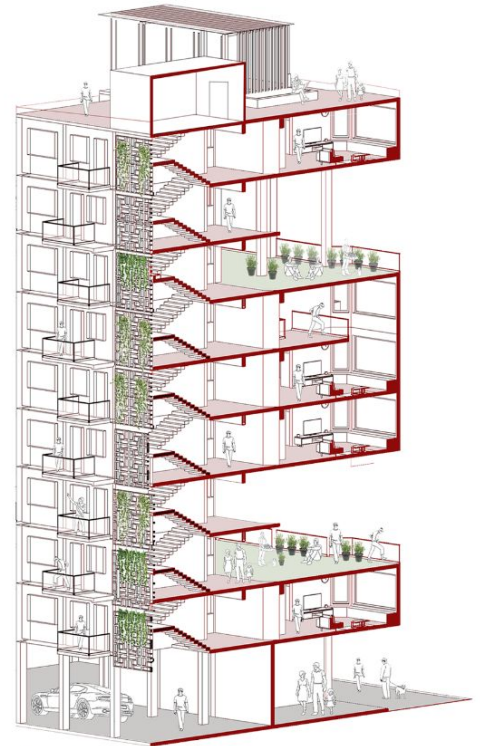
- Co-living of shared neighborhood -Sense of interaction within the society.
- Co-living of resources - Sense of interaction on the floor of residence.
- Co-living of needs - Sense of interaction around neighbors.





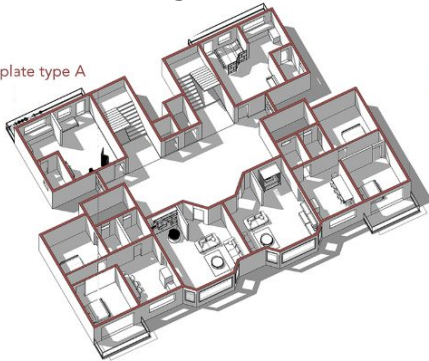
## SUGANDHA DAS & SIDDHANT MORYE

The design intent & idea was to reconsider housing as concept of the self-contained, hybrid home, to develop a mixed-use building style that will serve families and individuals who are employed in the industrial industry and support their live, work, and play ecology. The focus here being on transient community, flexibility, modularity was taken as main approach towards the design process. According to in-depth user analysis and MIDC building regulations the types of modules & units were finalized in terms of area requirements. Typical floor plans were achieved with various permutations and combination of units orientation with respect to habitable vs services core at the same time focusing on the overall orientation of the building on the site responding to the context. To make the design equitable and avoid display of hierarchy in staff studio apartment were arranged with bigger units, proper stacking of Duplex Apartments on the same was achieved Overall the intention was to create a living+work environment for employees & their family as harmonious communal living in MIDC area of Mahad.



Perspective section AA'

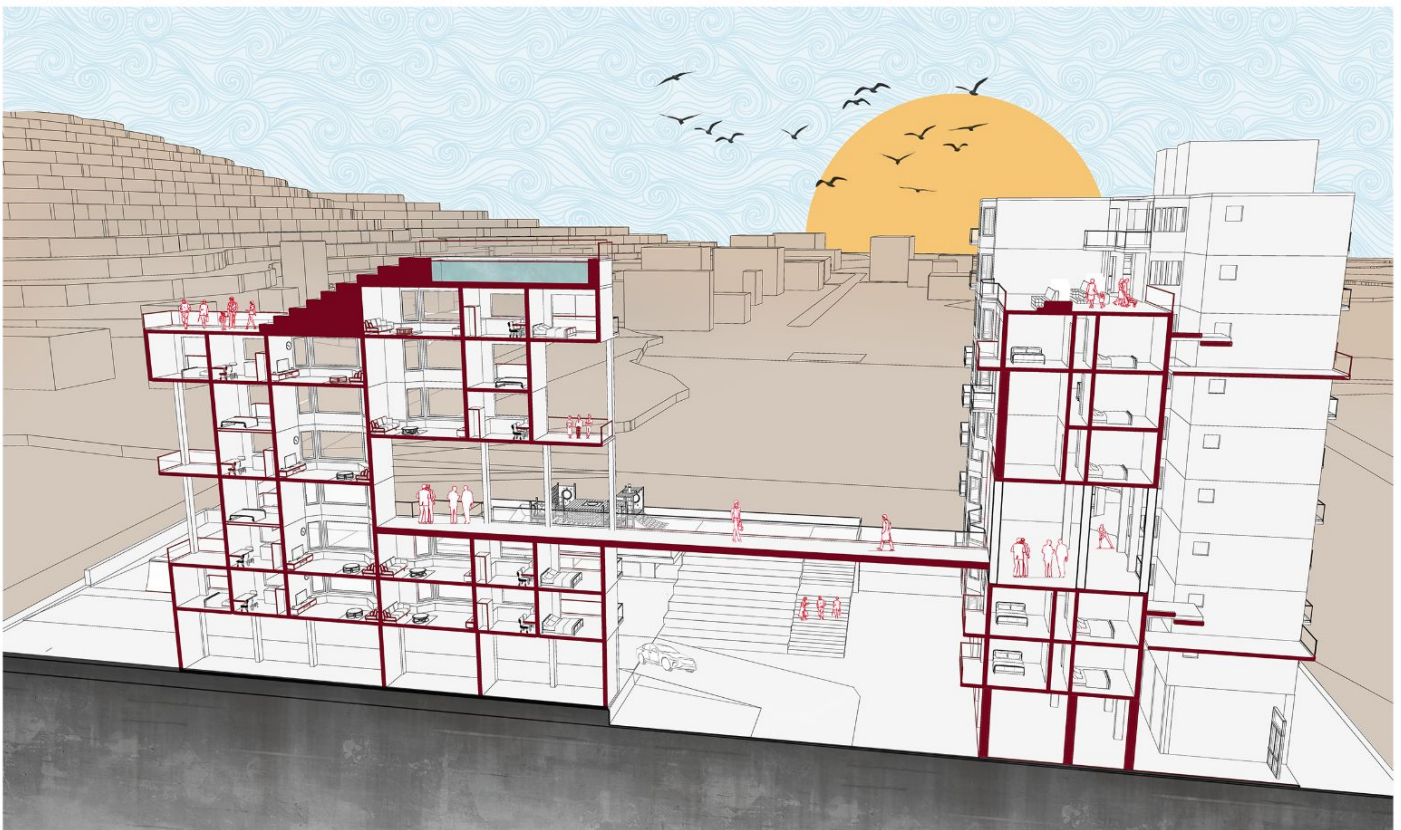
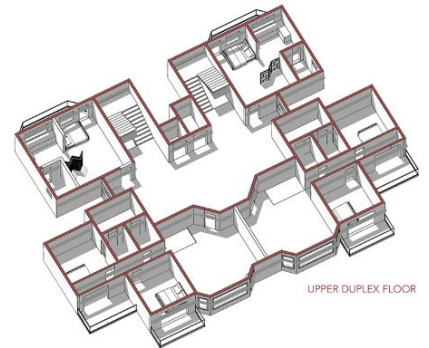
Floor plate type A



Floor plate type B  
(DUPLEX)



UPPER DUPLEX FLOOR



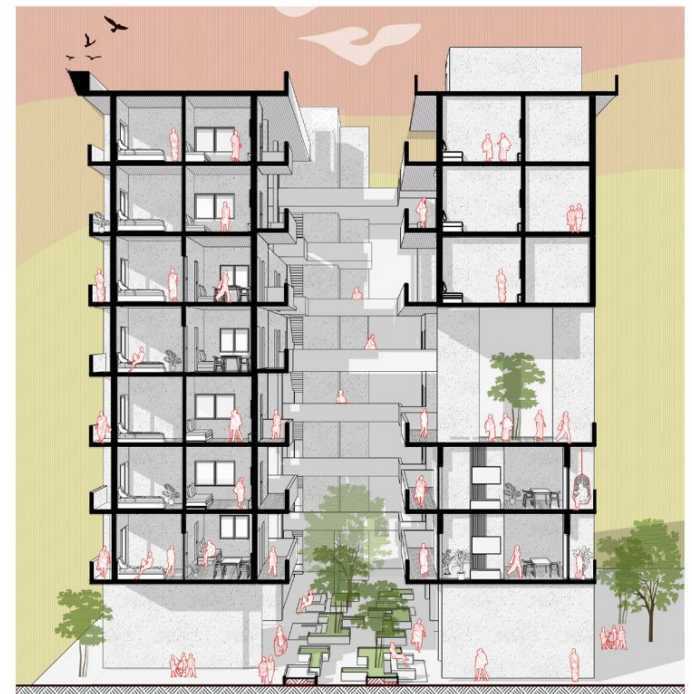
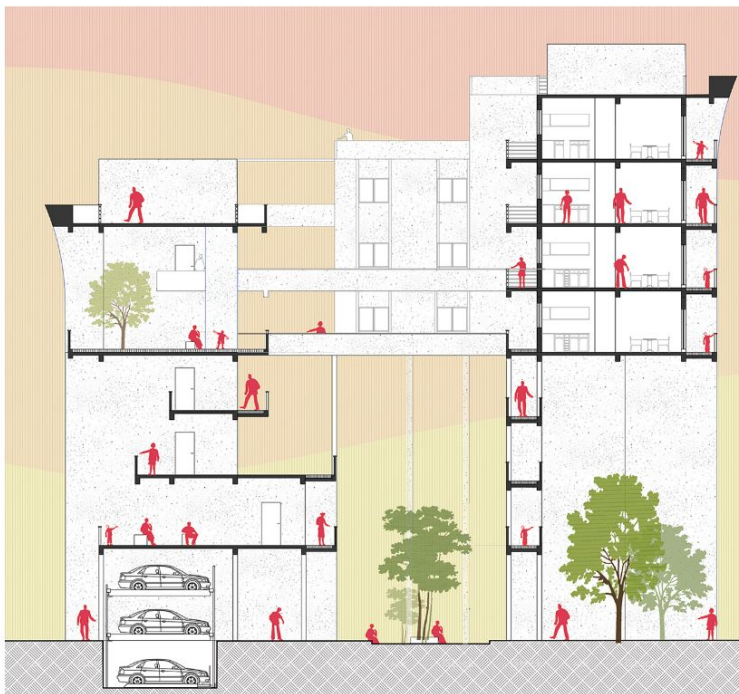
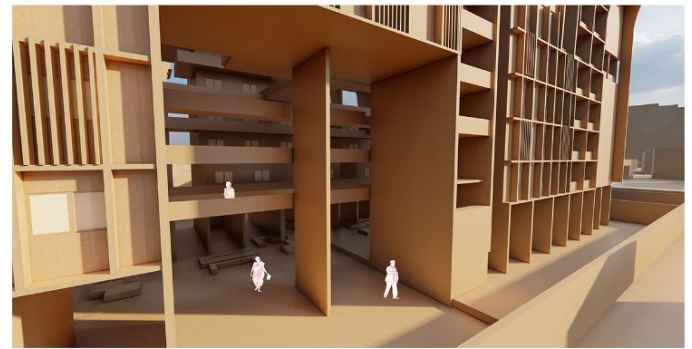
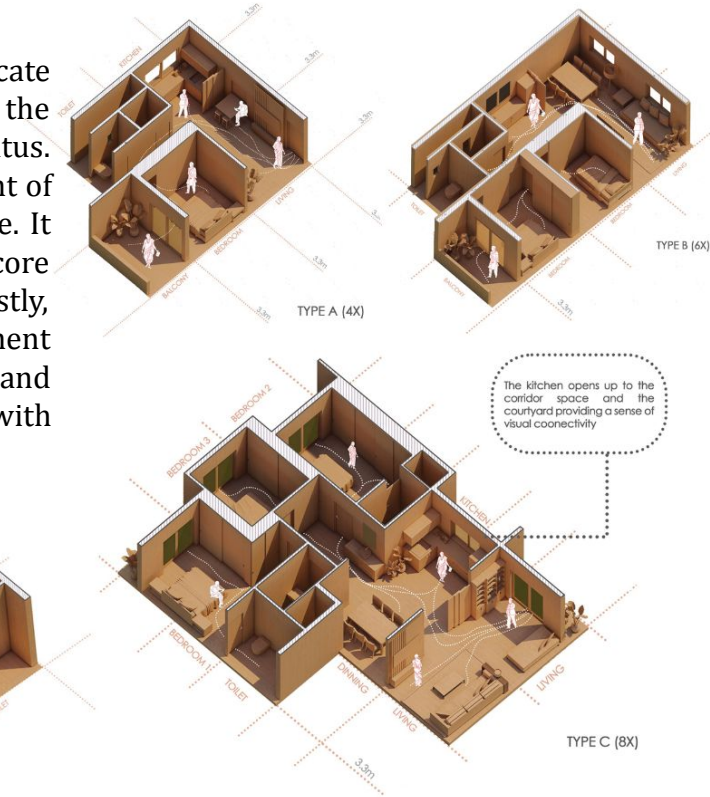
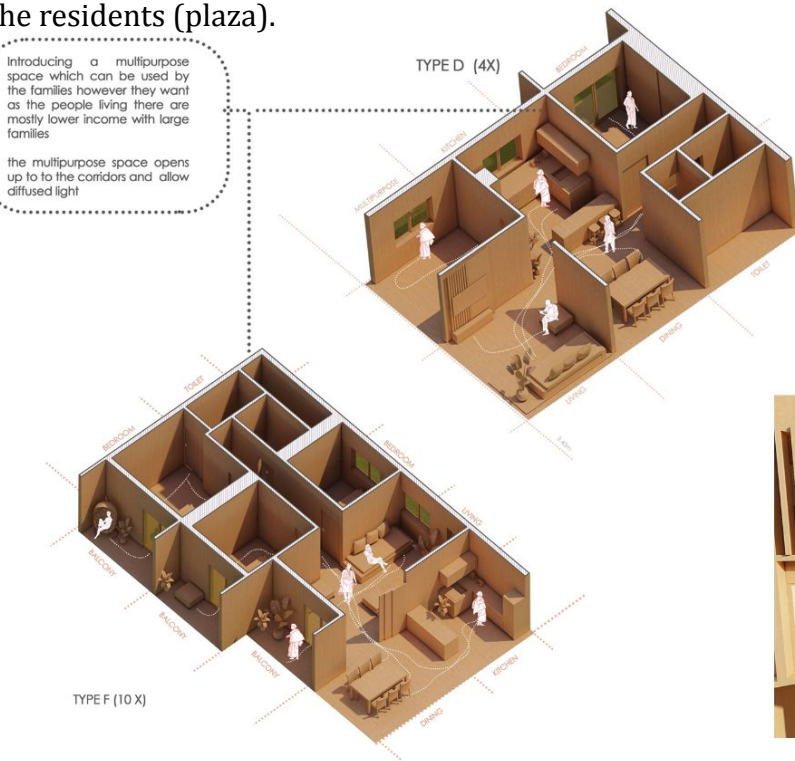


## SHRAVYA KARUTURI & SUDESHNA CHATTERJEE

Through this project, an attempt has been made to eradicate the current 'closed-door culture' often observed in the modern day housing colonies through movement and status. The shaded community spaces- the voids, become a point of interest for the occupants and possess ability for people. It aims to promote more engagement through three core elements- the void, the connectors, and the plaza. Firstly, amongst the residents (the voids), secondly the engagement between the residents and the context (connectors) and third, the connection between the city and the citizens with the residents (plaza).

Introducing a multipurpose space which can be used by the families however they want as the people living there are mostly lower income with large families

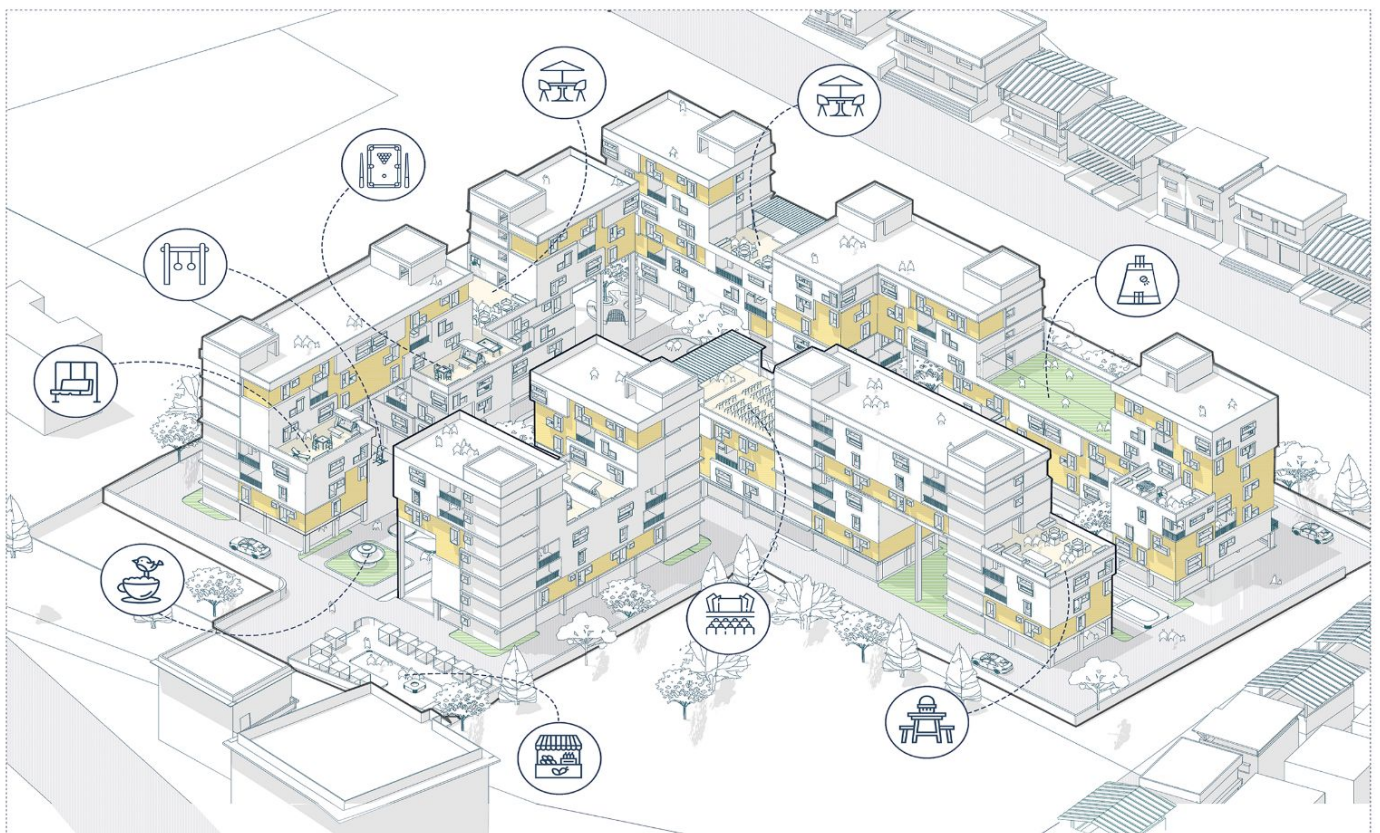
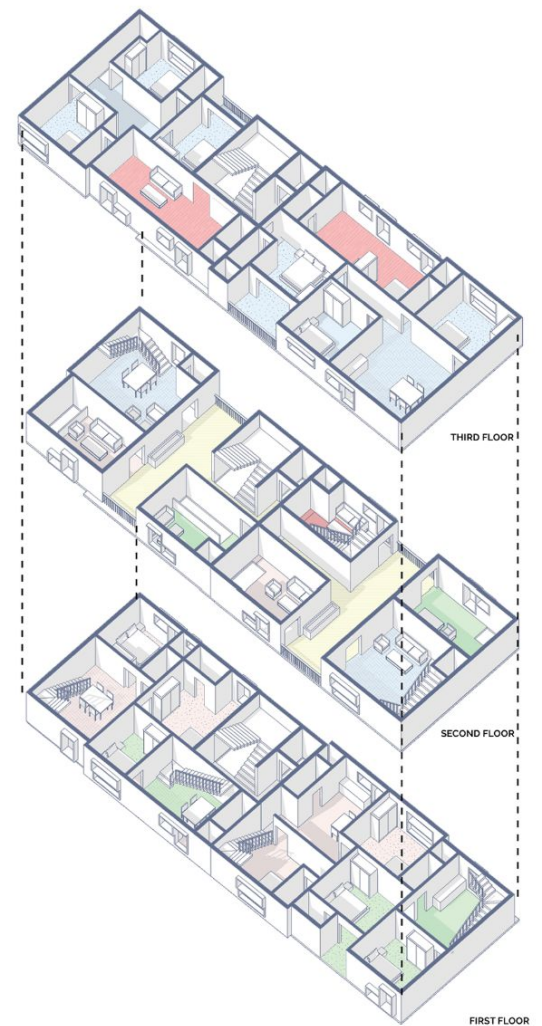
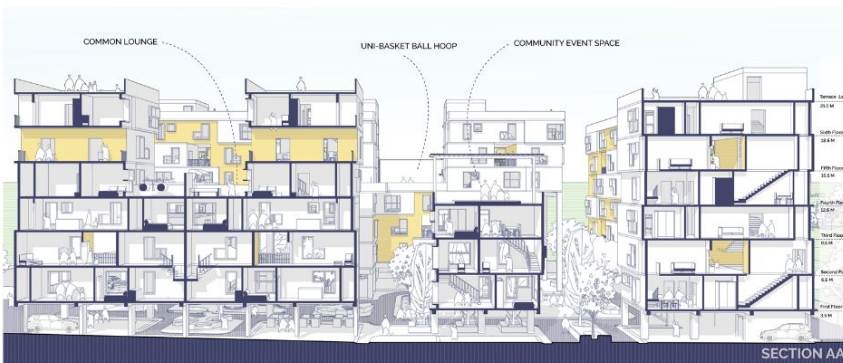
the multipurpose space opens up to the corridors and allow diffused light





## SHIVAM PATIL & AISHWARYA SAWANT

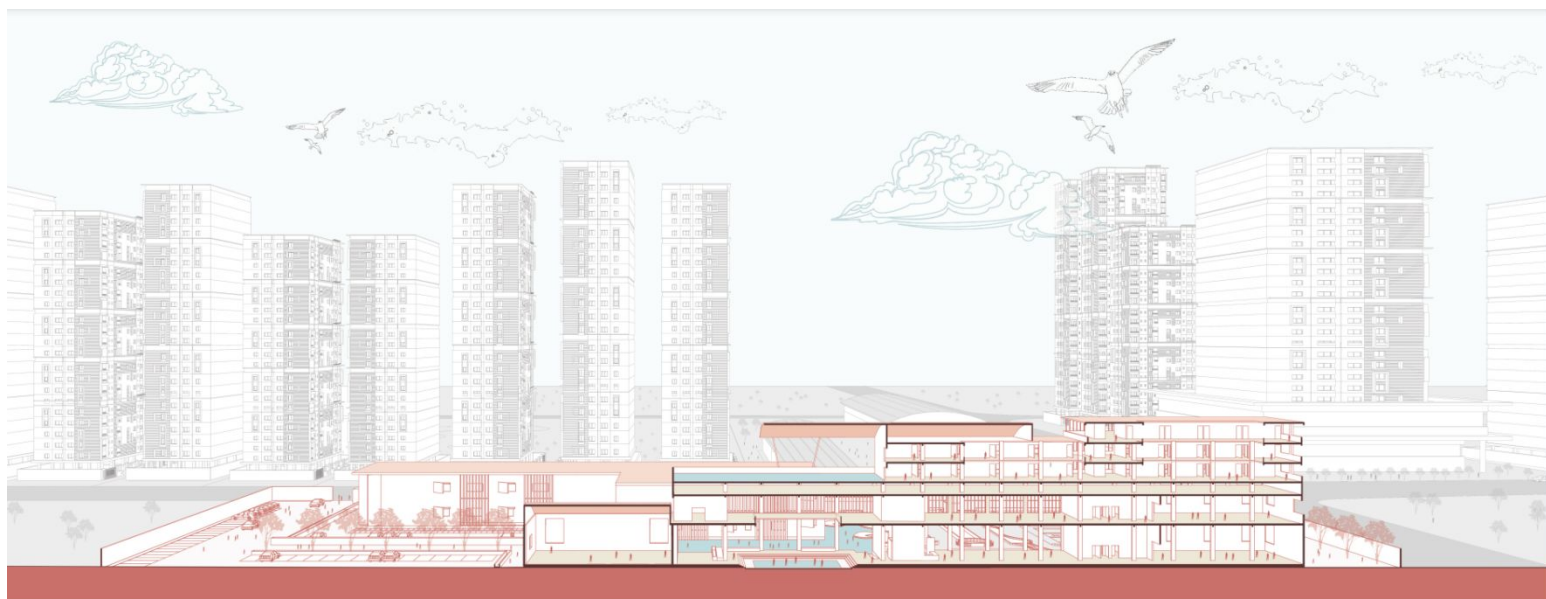
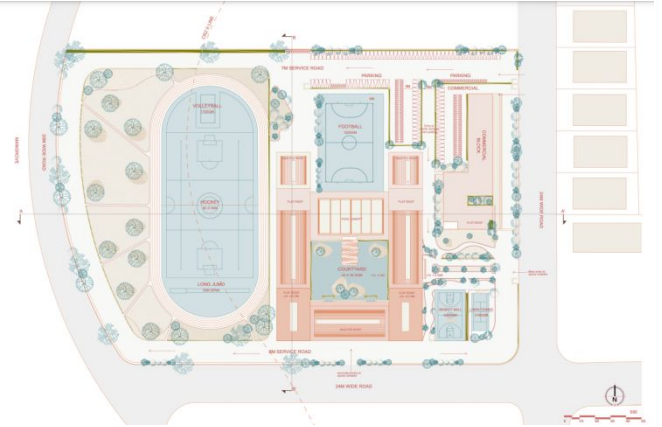
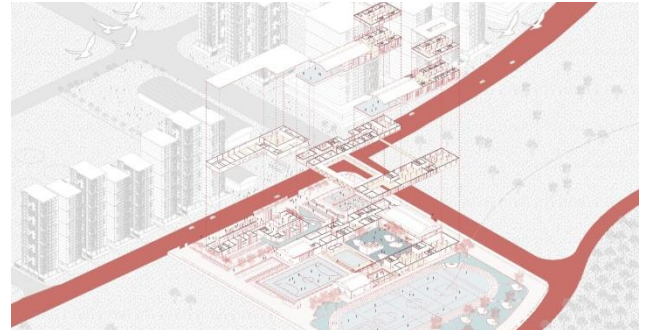
The aim of the project is to design a dwelling having rich communal importance suited for employees with various socio-cultural and economic background. External spaces need to be designed for people to use together, whether it be walking along the street or finding spaces to dwell, people are more likely to be with others and we need to design spaces that support rather than prevent social use and to find a positive relationship between the different user group using the external spaces





Aishwarya Gothe  
Anju Pillai  
Gauri Shelar  
Neha Gupta

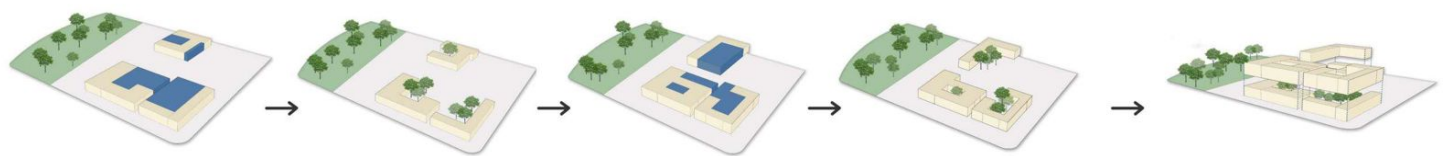
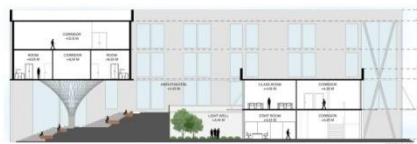
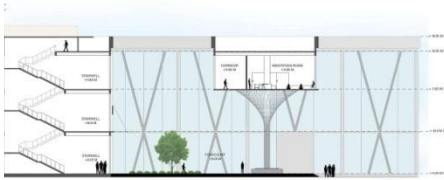
The Sports Complex is Located in Ghansoli ,surrounded by Mangroves on one side and Roads on the other Sides. Playgrounds and Courts being an important part of the program are zoned first , in North South Orientation. Main access and the Secondary Access spines are created in relation to the adjoining hierarchy of Roads . Grid planning , and Horizontal vertical layering of programs are the major concepts applied leading to form articulation. Public programs like multipurpose Hall ,Gym , Canteen , Spa , Indoor Courts are layered on ground floor , Semi public Programs which include Admin , Library , Academic Blocks are zoned on First floor and Private Accommodation Programs are layered on the upper Floors. The Staggered Forms opening up towards north and placing of Badminton courts towards south Responds to the Microclimate allowing maximum intake of North Light and Blocking of Harsh South Sun. Wide steps and platforms located in the central court hold cultural activities and also connect the building to the landscape. The intended concept aims to establish a tranquil relationship between building, human, site and nature. Formal and informal interaction is encouraged through the use of common areas for staff and students. The main material used is Concrete and Bricks .Concrete is employed for structural systems and Exposed brick with Cavity walls for Walking System . The Cavity walls help in controlling the Microclimate, trapping the hot air and cooling the Interior, reducing the need of air conditioning and making the design sustainable. Moreover, the sports facilities adhere to District level standards.





**Kashish Bhojak**  
**Daniyal Jaweed**  
**Shaurya Pratap Singh**

The site is planned along the principles of centralized planning. It is designed as a series of servant and served spaces. The served spaces or the central core of the project that links all activities across the project are placed at a location that could be easily served through allied buildings. This served space located centrally hosts the administrative block and eateries. The servant spaces that provide main activity related spaces are connected to the central administrative block and are constantly in contact with the same, thus providing for a seamless transition of crowd, materials, and management. These rings of servant spaces serving the inner served space provide for the core philosophy of centralization and centralized planning, which served as the main driving force for design and concept development.





**Subiksha Rajagopalan**  
**Pranali Shinde**  
**Ronak Majethia**

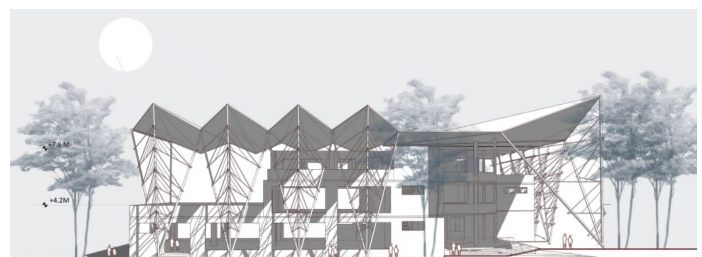
This project focuses on the design and development of supporting facilities and commercial units for the Proposed Sports Complex at Ghansoli, Navi Mumbai. The design was based on

1. Function and program
2. Environmental Sustainability
3. Utilities and Services

The design applied the concept of folded plates to achieve maximum interior span without any structural hindrances. It is also used to increase structural strength. The intent was to create open and green spaces within the design for ample ventilation and visual connectivity. Green facades attract and lose less heat. The plants also cause evaporation, which helps keep interior space cooler. Layered terraces form a sense of openness and help to connect with the environment. Window height to floor width ratio is kept such that the light entering covers the entire floor area. In such a manner all the rooms receive maximum sunlight. Applying trees as building shading devices is an efficient passive method of solar control. In the shaded area, the irradiative and thermal loads are significantly lower compared to the non-shaded ones. Hostel block is placed so that the users can enjoy the lush green creek side view from the terraces on each floor.



SEMI OPEN DINING SPACES



ELEVATION VIEWED FROM SOUTH

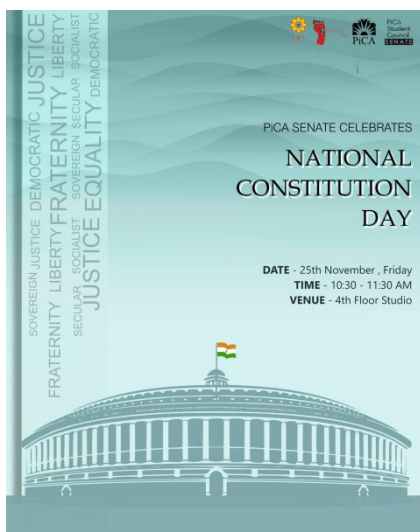


CURIOSITY GENERATED WITH THE HELP OF DYNAMIC ROOF AND FACADE WHEN VIEWED FROM ROAD JUNCTION









# NATIONAL CONSTITUTIONAL DAY

25<sup>TH</sup> NOVEMBER, 2022

The event was joined by our esteemed Principal ma'am, the faculty of PiCA, and students. The event started with Ms. Pallavi Taori, 3<sup>rd</sup> year student's presentation on the Constitution when it was formed, and why it is important. The Constitution helps to serve as a set of laws and principles that everyone in the country can agree on as a basis for how they want the country to be governed. It also describes citizens as believing that their country should support them. It is important as it protects the rights of the individual and the basic principles that govern the country. The event was followed by a short video on how we salute the great women and men who gave India a Constitution we are proud of. The event concluded with a warm note of gratitude.



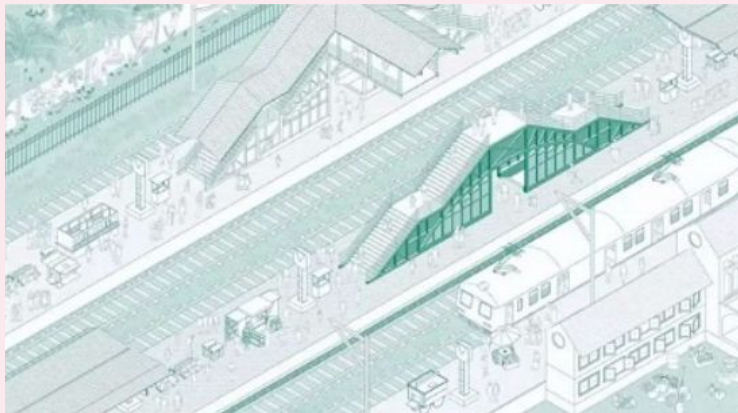
# GUEST LECTURE

# WORLD TOILET DAY

26<sup>TH</sup> NOVEMBER, 2022

Mr. Kalpit Ashar architect and an Urbanist based in Mumbai. He completed his master's education in Digital tectonics, self-sufficient habitats, and emergent territories from the Institute of Advanced Architecture of Catalonia (IAAC), Spain in 2009. His undergraduate dissertation was nominated for President's Medals Awards 2007, RIBA London. He has won J. N. Tata Endowment, Kamla Raheja Foundation, and Rotary Club awards. He was also a winner of the IAAC study grant. He was involved as a project architect with Charles Correa Associates and worked on various National & International projects.

The online guest lecture was conducted on the Zoom meeting platform for Students & Faculties from PiCA and other colleges attended this guest lecture. The lecture was an effort for students to acknowledge the importance of sanitation and how architecture plays an important role in providing an integrated space for the same. Students were introduced to the competition of Nirmal 2022 'Roadside Toilet Facilities'.







## INDUCTION DAY

28<sup>TH</sup> NOVEMBER, 2022

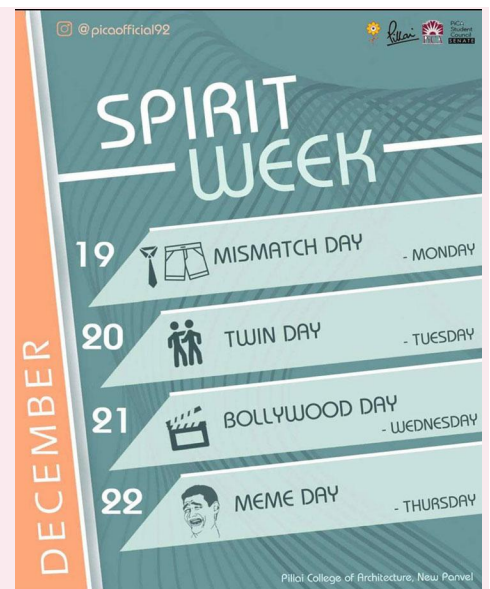
The 'Induction Day' was conducted on 28th November, 2022 at 10.30 a.m. in the college's auditorium. Prof. Ashwini Bhosale Patil welcomed the faculty, students and parents. Videos were played about the Pillai College of Architecture and the studio culture in the course before the start of the program. After that, Principal Dr. Sudnya Mahimkar came up on stage and interacted with the students and their parents about the course. Rest of the faculties explained about the studio culture, academic as well as cultural activities and events taking place in Pica. Finally students along with their parents attended the exhibitions in the studios on their way out.



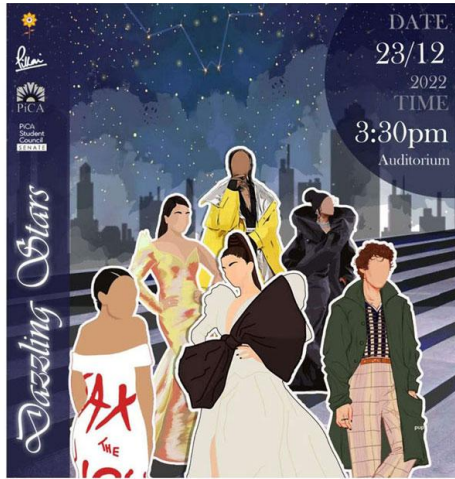
## SPIRIT WEEK

19<sup>TH</sup> DECEMBER, 2022

Mismatch Day was celebrated on 19th December, The First Day of Spirit week. Followed by Twin Day on 20th, Bollywood Day on 21st and Meme Day on 22nd. The week was celebrated with great energy and enthusiasm shown by the students of PiCA. This event was meant to come together to make everyone show their spirit and enthusiasm by dressing up according to the days allotted. The Pica senate provides such platforms for building unity and strength among the PiCAns. Almost all of PiCA participated in this week, including the faculty







## FRESHERS

### FRESHERS DAY

23<sup>TH</sup> DECEMBER, 2022

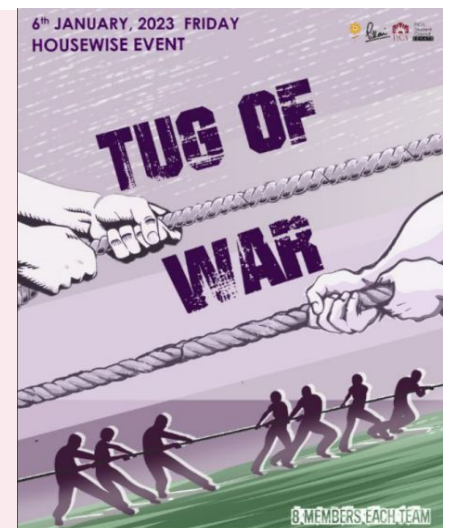
The S.Y. B.Arch. a batch of PiCA had organized an eventful Freshers for the new batch of baby PiCAN. The commencement of the event happened on a very healthy, cheerful note with the introduction of a few baby PiCANs. We got to know a little bit more about each of them. This introductory panel was followed up by an energetic dance performance. After having another set of 10 juniors' introductions, a soulful duet performance took place from the first-year batch. Continuing with getting to know some more of our talented juniors, they were invited up on stage and entertained the audience. Soon, a guitarist Baby PiCAN set the stage on fire with his singing skills! Next up, after a few more introductions, the 2nd years were present on stage to mesmerize everyone with their dance. The event included more performances from 2nd years and 1st years which enhanced the evening. To encapsulate the essence of Freshers 2022, the titles of Mr. and Ms. Freshers were announced. The event was concluded with a warm note of gratitude.



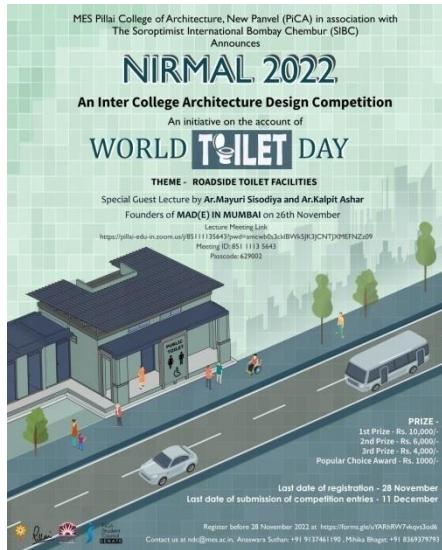
### TUG OF WAR

6<sup>TH</sup> JANUARY, 2023

The event was a fun, energetic, and enthusiastic sports event. Exercise and sports participation has long been established as an important factor in reducing the risk of many physical problems. The event began at 3:30 pm, and the students from 1st to 3rd years were assembled to take part in the sports event while the rest of the crowd surrounded the ground for cheer, and accordingly, the teams were prepared for their matches. The audience energetically cheered and praised fellow teammates boosting players' morale. The teams were divided based on Years. The match started with teams in the boy's category 3rd Years up against 2nd years, and in the girl's category the 1st years up against the 3rd years. In the Endgame, it was a tough fight, and with a mighty pull from the boy's category, the 1st years, and from the girl's category the 3rd year won the match! Teams praised each other and with a celebratory picture, event came to an end.







## WORLD TOILET DAY 7<sup>TH</sup> JANUARY, 2023

Every year PiCA celebrates World Toilet Day organizing Nirmal Design Competition. The Senate student council in collaboration with Soroptimist Welfare Association organized a Prize distribution ceremony. The ceremony was hosted by Assi. Prof. Aditya Gujarkar with welcoming chief guest Miss. Namrata Saxena, President of SIBC, Jurors, Faculty, and students from colleges from new Mumbai. The ceremony began with a brief introduction about the competition an inter-college architectural design competition help on account of World toilet day. The winners of Nirmal 2022 were announced after which Prof. Smita Dalvi gave a brief introduction about jurors and Chief Guest to share their experience about the entries. The event ended with a thank you to the chief guest for joining and Giving them the value of public toilets in today's society.



## GUEST LECTURE

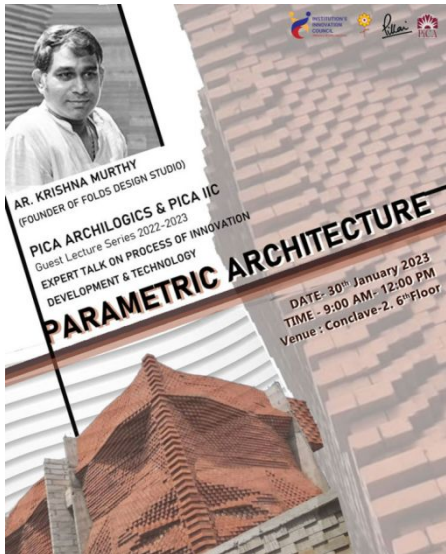
### PICA ALUMINUM TALK 23<sup>TH</sup> JANUARY, 2023

The session started with introducing Ar. Salil Keny, Alumni of Pica Working as A Job Captain/ Designer in Kenneth Boroson Architects, USA. The objective of the session was for students to have a one-to-one discussion with him and understand how to cope with the different lifestyles, cultures, food, etc. also the major problem of how to tackle finances while pursuing their postgraduate degree overseas. He also explains his experience in the US, the various jobs he did, and how he selected them. He told students doing a part-time job to earn is necessary but selecting a proper job is more important. The students also asked various questions related to architecture working style abroad. Salil showed a presentation of his work done abroad. He also interacted with the students regarding when to start applying and the preparation needed for the exam.





## EXPERT TALK – PARAMETRIC ARCHITECTURE 30<sup>TH</sup> JANUARY, 2023



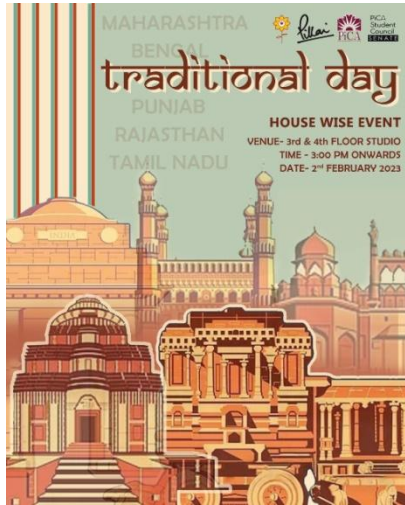
The session began with the introduction to speakers by Prof. Sarojini Lohot. Folds Design Studio. The firm works not just in architecture but they work in interiors, product design, and fabrication too. They have a huge lab in Karjat. They also have an academy that teaches learners about the designing and execution of parametric architecture and product design. The presentation was given by Architect Krishna Murthy on his experiences in a variety of projects throughout his journey. The presentation mainly highlighted his Professional Experience and Knowledge to the students. It varied from an IT park facade and its interiors, residences from the skin to washbasin design, a gate in the public garden to an airport clock, and art installation.

He discussed various challenges and even failures faced in a number of projects, but he also talked about how they managed to work on it again with modified techniques and made those structures stand again. Material research plays a very important role to avoid and alter such complications. Defining which material to be used in different functions is crucial. After all these years of experience and trial n error, as there are hardly any architects in India who are working in this futuristic architectural field, he explained to students how to use different materials for parametric construction, use of finishes, and adhesives. Inspired and encouraged them to explore while designing. Ar. Devansh also shared his experience working on projects with kinetic facades, using software like Grasshopper which helps during the design process to understand the building response with the surrounding. The session, towards the end, opened up with an interactive question-answer session where faculty and students shared how the presentation was informative for them, gave them a different perspective to look at the future, and also got their doubts clarified by the speaker.

Ar. Krishna Murthy also talked about Folds Academy – courses and workshops, tie up with Chennai's RVS institute, academy of advanced architecture and Design for B.Arch. He talked about the importance of reducing the gap between design and execution







## TRADITIONAL DAY 2<sup>TH</sup> FEBRUARY, 2023

The celebration of the traditional day with all the students of the college was divided into different groups according to the houses. All 5 houses were given different states like Maharashtra, Bengal, Kerala, Punjab, and Rajasthan the traditions of which are very rich and known all over India.

The celebration started with a fashion show showcasing traditional outfits of various states. They also were dressed in a particular state attire along with serving them famous food. There were also different games arranged which were also given house-wise division wherein people were welcomed and everyone from faculty to students was welcomed to join in these events and enjoy the different traditions along with getting to know about them. There was also a voting system arranged wherein at the end before moving out everyone voted for the particular house they liked and there was also an announcement of the winner.





kinesthesia 2023	
	<p>9:30 am - 12:00 pm <b>MAKING AND BREAKING BRIDGES WORKSHOP</b> by Prof. Sasmit Acharekar &amp; Prof. Prashant Borge VENUE: Ground Floor Studio</p> <p>9:30 am - 12:00 pm <b>ORIGAMI WORKSHOP</b> by guest speaker Ar. Bobbie Vijayakar VENUE: Second Floor Studio</p> <p>1:00 pm - 4:00 pm <b>FURNITURE DESIGN WORKSHOP</b> by Prof. Jayraj Ghatge &amp; Prof. Aditya Gujarkar VENUE: First Floor Studio</p>
<b>DAY 1</b> MONDAY 6th FEB	
<b>DAY 2</b> TUESDAY 7th FEB	<p>9:30 am - 12:00 pm <b>FURNITURE DESIGN WORKSHOP</b> by Prof. Jayraj Ghatge &amp; Prof. Aditya Gujarkar VENUE: First Floor Studio</p> <p>9:30 am - 12:00 pm <b>HANDS ON WHEEL WORKSHOP</b> by Mr. Satish Joshi VENUE: First Floor Studio</p> <p>9:30 am - 12:00 pm <b>MAKING AND BREAKING BRIDGES WORKSHOP</b> by Prof. Sasmit Acharekar &amp; Prof. Prashant Borge VENUE: Ground Floor Studio</p>
<b>DAY 3</b> WEDNESDAY 8th FEB	
<b>DAY 4</b> THURSDAY 9th FEB	<p>9:30 am - 12:00 pm <b>MURAL WORKSHOP</b> by Prof. Kedar Shinde &amp; Prof. Jayesh Patil VENUE: Ground Floor Studio</p> <p>9:30 am - 12:00 pm <b>DANCE</b> by Ar. Nimisha Sudheendhran VENUE: Ground Floor Studio</p> <p>9:30 am - 12:00 pm <b>FLUID ART</b> by Mrs. Vidya Angolkar VENUE: Ground Floor Studio</p> <p>9:30 am - 12:00 pm <b>MURAL WORKSHOP</b> by Prof. Kedar Shinde &amp; Prof. Jayesh Patil VENUE: Ground Floor Studio</p> <p>9:30 am - 12:00 pm <b>HANDS ON WHEEL WORKSHOP</b> by Mr. Satish Joshi VENUE: First Floor Studio</p>
<b>DAY 5</b> FRIDAY 10th FEB	

## KINESTHESIA

10<sup>TH</sup> FEBRUARY, 2023

### DAY 1

**Making and breaking bridges** -Kinesthesia was finally here and was kick-started with a very fun workshop. This workshop was organized for 1st and 2nd-year students and led by Prof. Sasmit Acharekar and Prof. Prashant Borge wherein students were given a task to design and make bridges that can sustain certain loads within a given time constraint.

**ORIGAMI** - The workshop was conducted by the guest speaker, Ar. Bobbie Vijayakar sir which was attended by 3rd and 5th year students. They were taught to make different types of caps, a crane, and various other paper folding crafts - origami.

### DAY 2

**FURNITURE DESIGN (Combined)** Prof. Jayraj Ghatge and Prof. Aditya Gujarkar co-ordinates this workshop where groups of students worked on Rhino to make a furniture piece. A single design was then laser cut and made in scale. The parametric chair turned out to be a masterpiece.

### DAY 3

**HANDS ON WHEEL** - Mr. Satish Joshi was invited to conduct a workshop for all students and faculties wherein they were to be asked to make different abstract objects using sculpting tools and other techniques. Later every individual had an opportunity to make a clay pot with Sir on the wheel.

### DAY 4-5

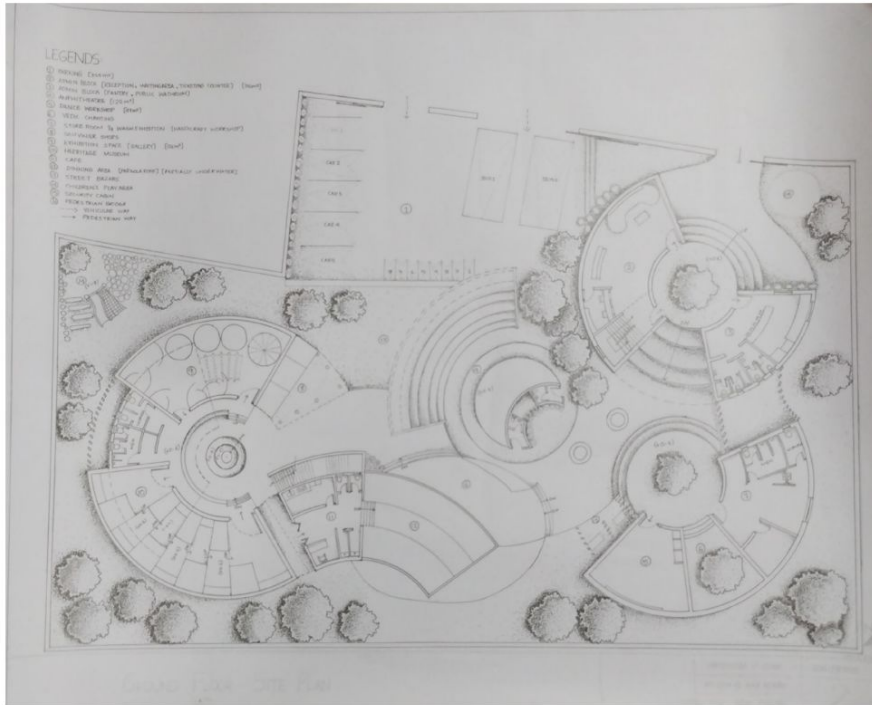
**MURAL WORKSHOP** - Prof. Kedar Shinde and Prof. Jayesh Patil conducted a workshop where 5 groups of each year were made and they were asked to paint their favorite painting near the office staircase to make it an interesting path to pass.

**DANCE** - Ar. Nimisha Sudheendhran was invited to conduct the workshop which several students from all years and even faculties had the opportunity to enjoy.

**FLUID ART** - Mrs. Vidya Angolkar enlightened the students where each student was given an A-4 size canvas and fluid art kit by Fevicyl to work on and take their beautiful artwork home



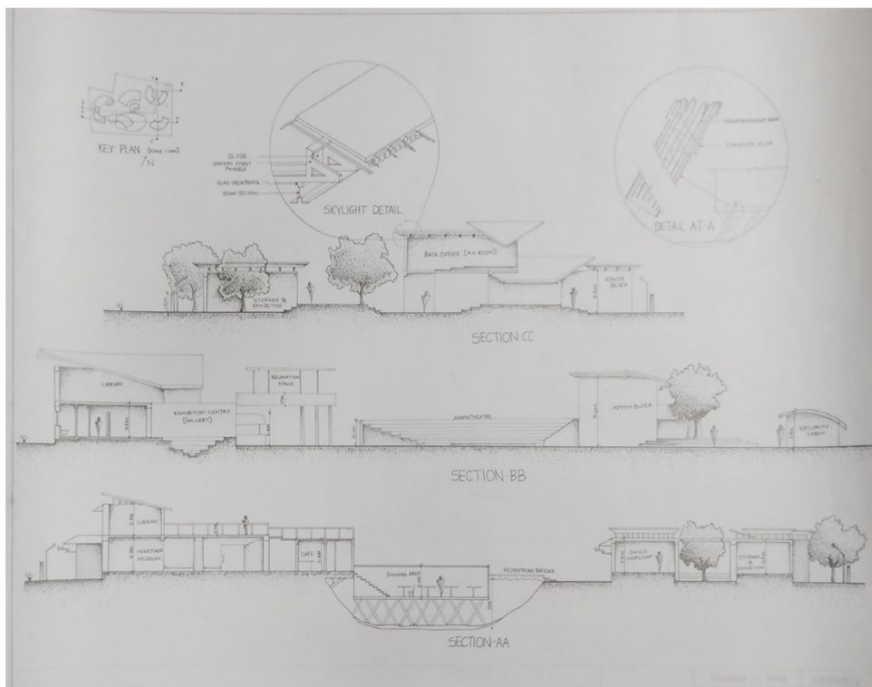




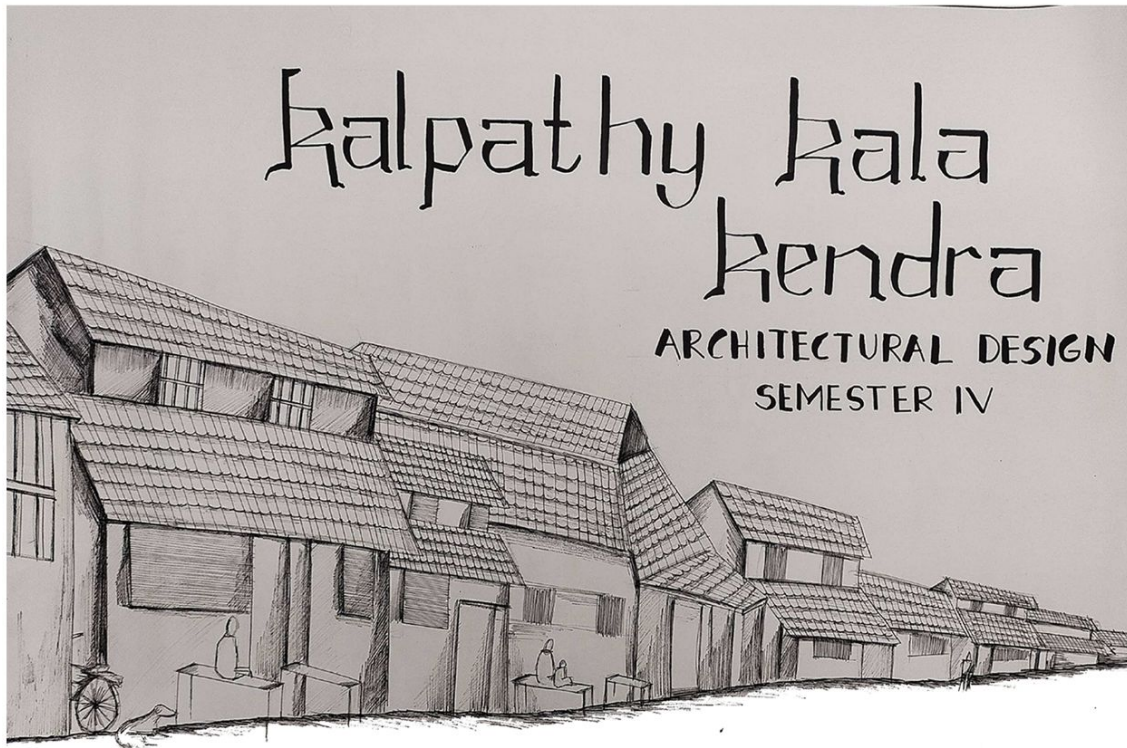
## HRISHIKESH SHAH

SEM 4

Kalpathy has declared a heritage site for its traditional vernacular and 120 years old practiced housing typology. The common housing pattern of the village was linear, narrow pathways, courtyards in the house and sloping roofs. After observing their housing typology I thought to design Kala Kendra in departure to the context but also adding their main housing elements. So I took the image of St. George Orthodox Church, that had narrow pitched arches on its facade. I abstracted that arches, placed it into a plan and went on adding their housing elements and design principles like proportion so that I could get defined pathway into the site and continuity between each structure. Then moving forward orientation was made through the climatology and sun path and placed each structure according to their usability



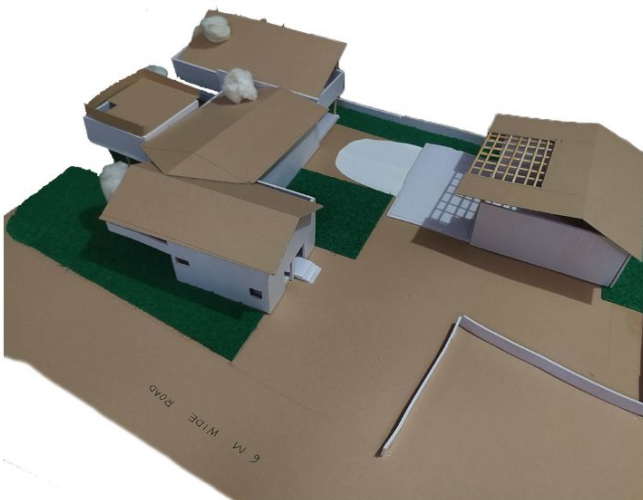
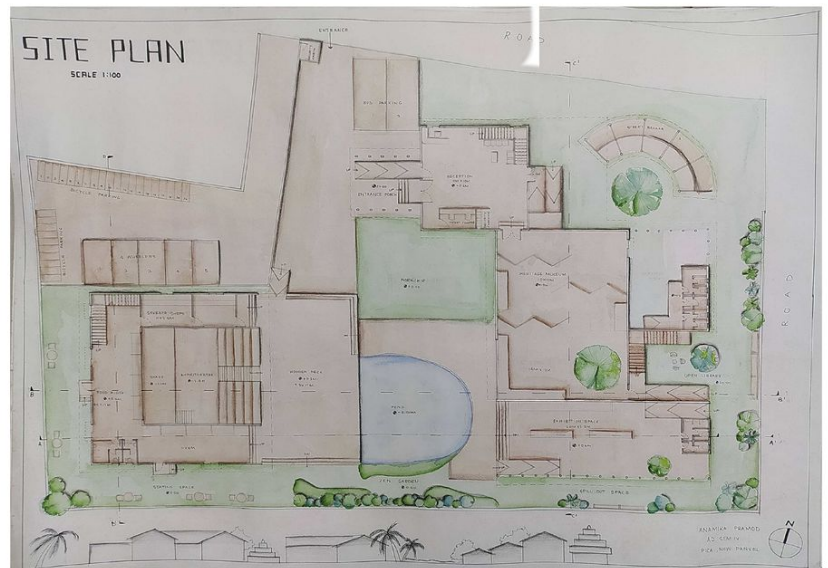




## ANAMIKA PRAMOD

SEM 4

Kalpathy is a heritage Village rich in culture and keeping alive its traditions. My aim for designing a cultural center in Kalpathy is to provide a space that enhances the community's experience. The main intention of my design was to give the locals an experience away from their mundane life while still making the project blend into the surrounding, also at the same time give the tourists an essence of Kalpathy in the same exact location.



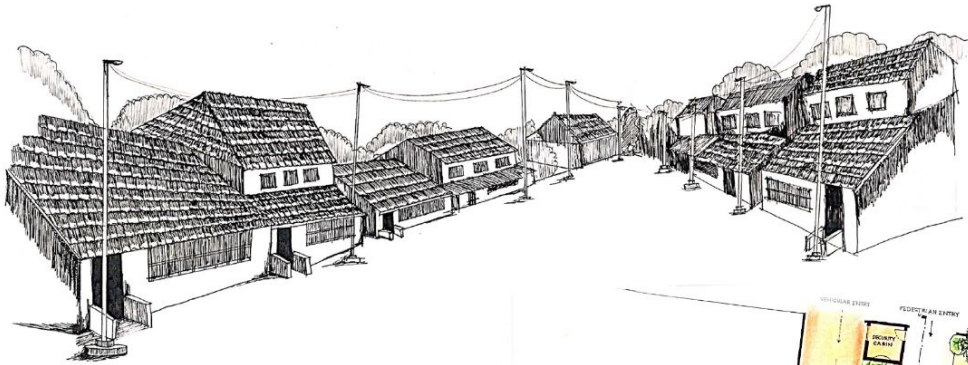
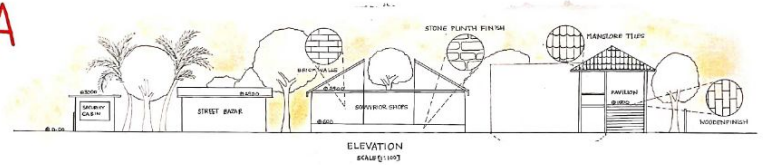


# SEEING . THINKING , MAKING

## KALPATHY KALA - KENDRA

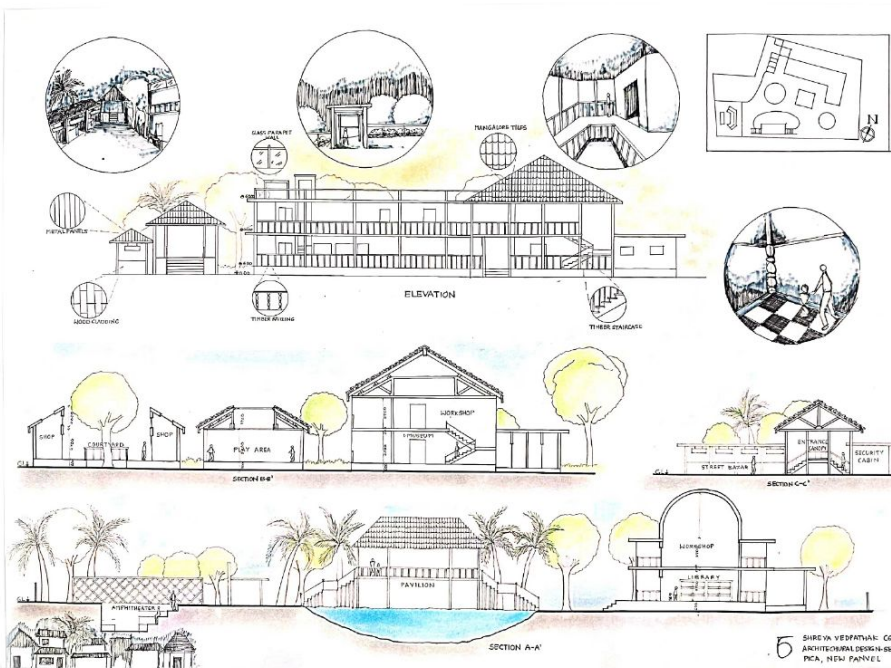
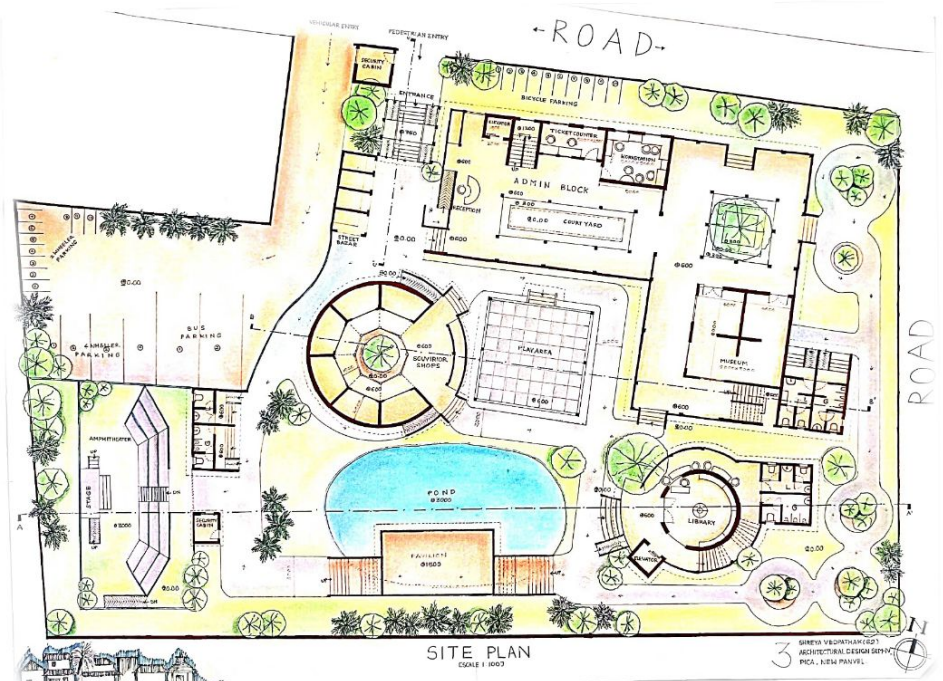
ARCHITECTURAL DESIGN

SEM - IV



SHREYA VEDPATHAK  
SEM 4

Speaking about the architectural character of Kalpathy the culture and architecture are two interlinked concepts that help to evoke uniqueness as an individual and a social being. Considering the impact of the traditional art and architecture on the Kalpathy I think I would like to make Kala Kendra a joyous experience rejuvenating the visitors with the spirit of the culture and tradition. To relate the context of the site the style of architecture is contemporary vernacular.

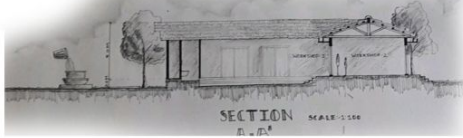


The type of architecture that is highly progressive, modern, high-tech, expressive, with the traditional simple practical techniques simplest form. The materials and techniques employed are not only time tested and reliable but clearly reflects a cultural and climate sensitivity towards the area. Corridors, courtyards act as a transition between the hot and humid exterior environment and the shaded interiors of the building. The project not only attains the sustainability but also a manifestation of a forgotten era. The structure is true to its context and testifies itself to the norms of vernacular architecture.

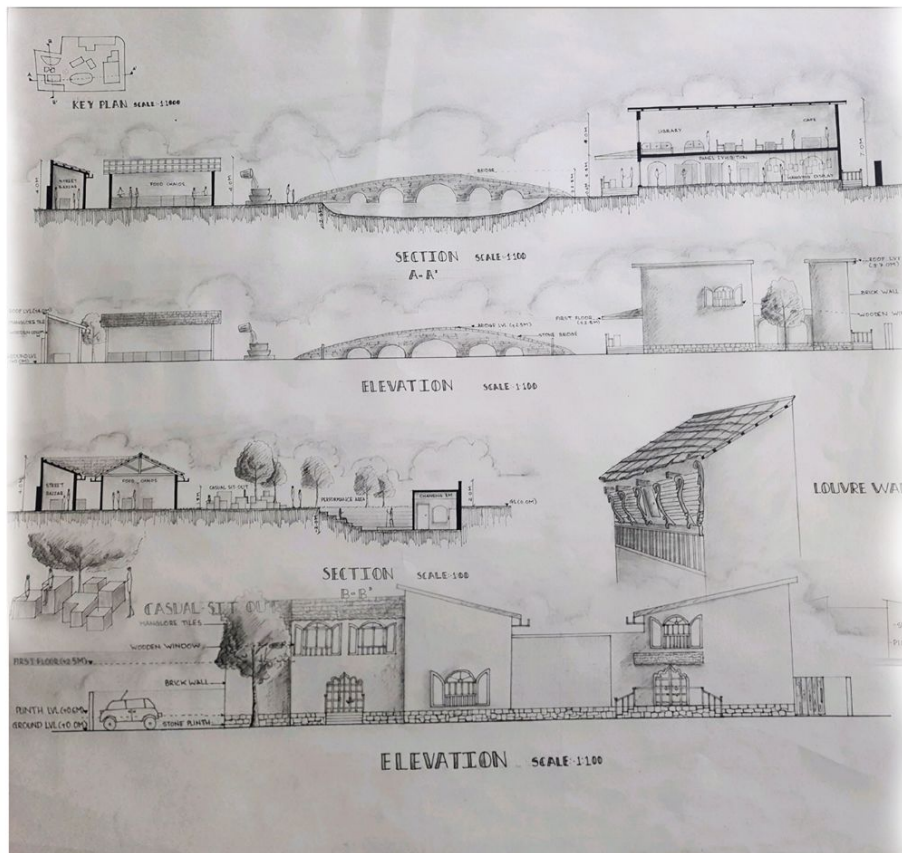
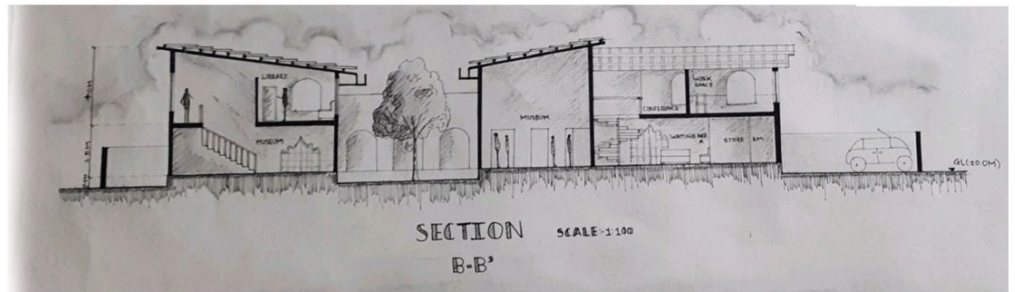
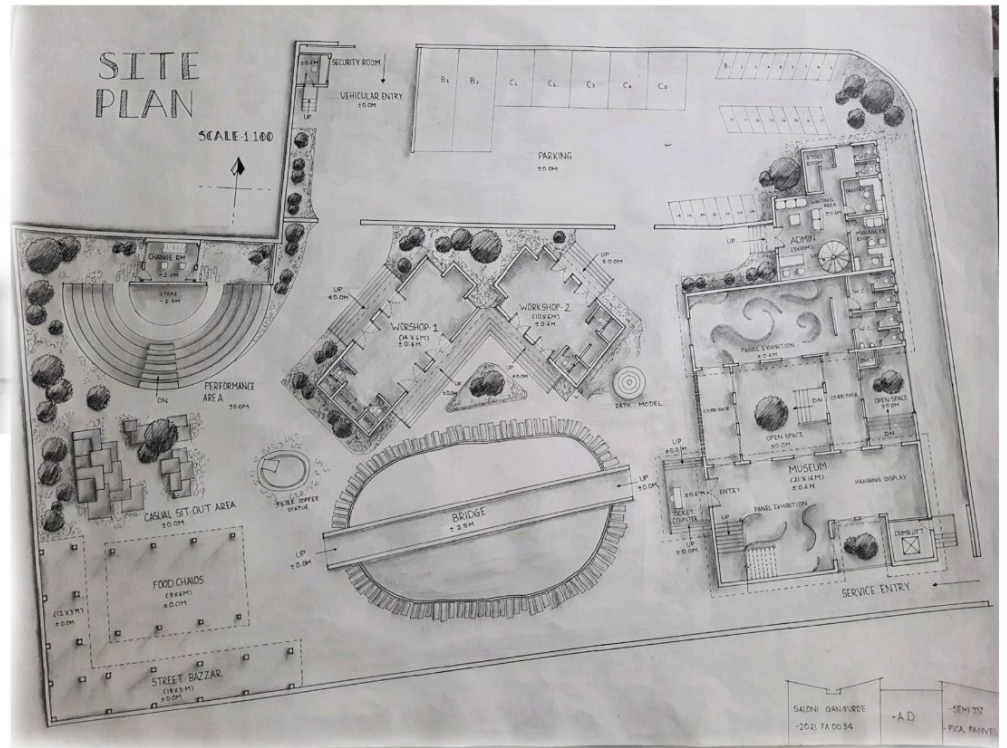


## SALONI GANGURDE

### SEM 4



The basic concept of my planning was to design a space which would have the essence of the Kalpathy village as well as of Kerala. Rather than keeping any creature or form as my concept designed according to the micro climate and site context. Also I choose to design vernacular architecture because of its sustainability, low carbon foot print, also we should be proud of our vernacular architecture.



A contemporary architecture would be a kind of alien thing for the users of Kalpathy but a vernacular thing would perfectly blend. A balance of open and semi open space have been maintained. Elements like arches, courtyard, louvers, wooden windows and doors have been incorporated which gives a sense of vernacular architecture. Basic materials like brick walls, Mangalore tiles for roofing have been used throughout the structures.

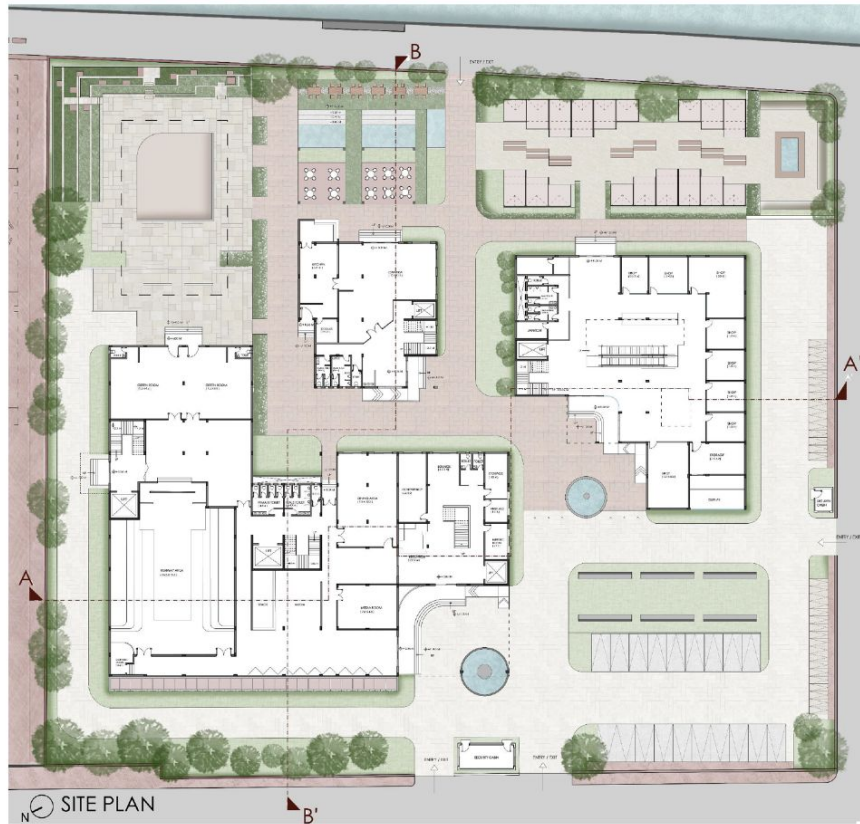


“

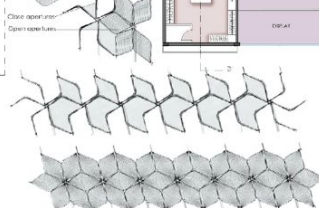
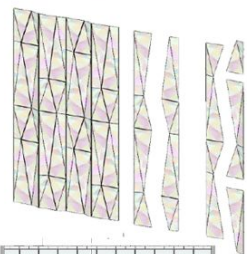
NIKITA SINGH

Sem 6

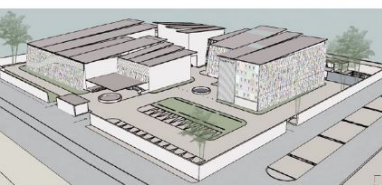
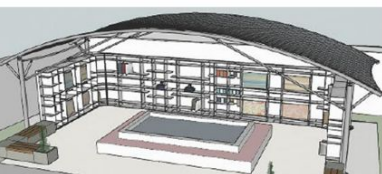
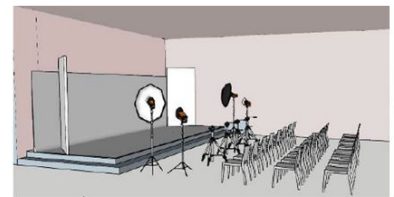
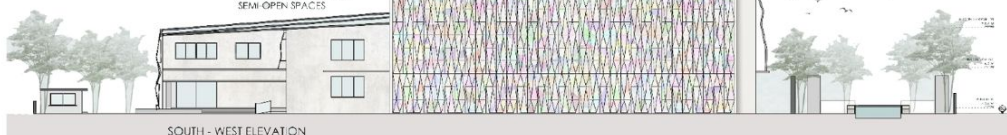
The intention behind the design of the fashion hub was to concoct a form of structure that possesses spatial divisions relative to private, public, and semi-public and serves as a meeting point for all the activities related to fashion. The form is developed by creating a dynamic facade to respond to climatic factors, with a multitude of color perceptions by incorporating holographic technology in its façade. It is a combination of runways, green rooms retail spaces, an exhibition area, a library, seminar rooms, office units, a food court, etc. with spill-out spaces to maintain the porosity and make it an interactive communal space for the people.



DYNAMIC SHADING FOR SEMI-OPEN SPACES



DYNAMIC SHADING FOR SEMI-OPEN SPACES



SECTION B-B'

SCALE = 1:200



“

## VIDULA GHODEKAR

Sem 6

Fashion hub, a glamorous place to exhibit one's talent through design and ideas, was to be built along the Sabarmati promenade which an extremely active and engaging space. The design challenge was to cater to the requirements of a fashion show area alongside a market space which is welcoming in nature. The aim was to create a site which is inclusive, for that, the site was divided into two zones –

- One with roads on two side and lower promenade to southeast. This was the main zone where the market could be placed to captivate civilians.
- Has an adjacent plot. This was apt for the fashion hub which tends to be an exclusive space at times.

Two axes of pedestrian access were established and public square along with food stalls and other activities were used to engage users. The edges of fashion hub were designed to porous so that there is public flow throughout the site. To further enhance the experience of users, there was play of visions followed to evoke the expressions of surprise, unprecedented elements, etc.



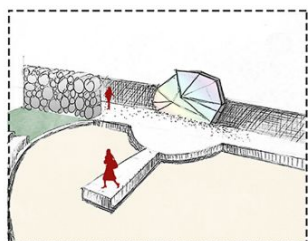
VIEW - FASHION SHOW AREA



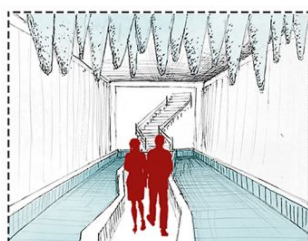
VIEW - EXHIBITION SPACE



VIEW - EXHIBITION



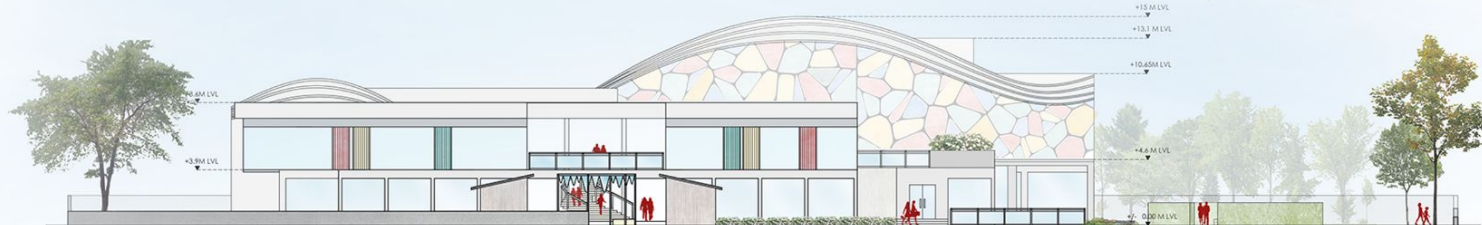
TEMPRAL RAMP VIEW



PEDESTRIAN ENTRY WITH  
MIST PAVILION VIEW



SECTION



NORTH ELEVATION



“

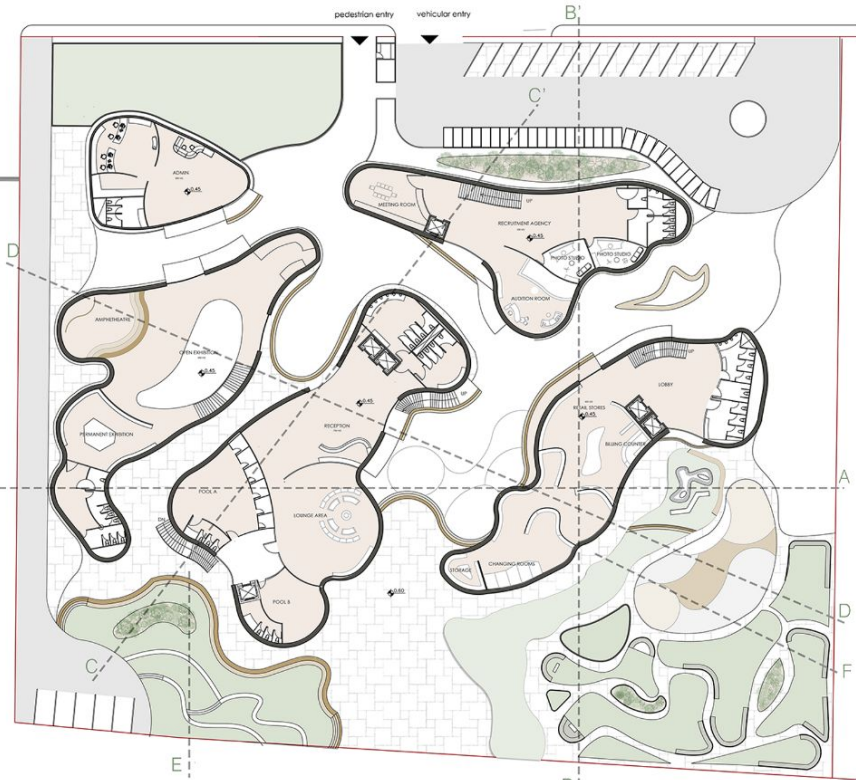
## ANUJ VICHARE

Sem 6

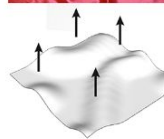
Fashion is a quintessential form of self-expression that encompasses clothing, lifestyle accessories, makeup, and hairstyle, amongst others. The primary aim of these fashion hubs is to create a structure that acts as a landmark, attracting fashion enthusiasts and generating substantial revenue.

In this regard, a new fashion hub concept has been developed, drawing inspiration from the folds of fabric resulting in a unique and aesthetically pleasing structure.

Another design concept that has been explored to tackle the issue of hosting large events is the traditional tie-dye process known as Bandhani which is a combination of dyed and undyed parts native to Gujarat, India. This concept is included into the proposed design by building plazas that host diverse activities throughout the year. In the Bandhani process, where both the dyed and undyed sections are equally important, these plazas represent the undyed part, while the structure represents the dyed part.



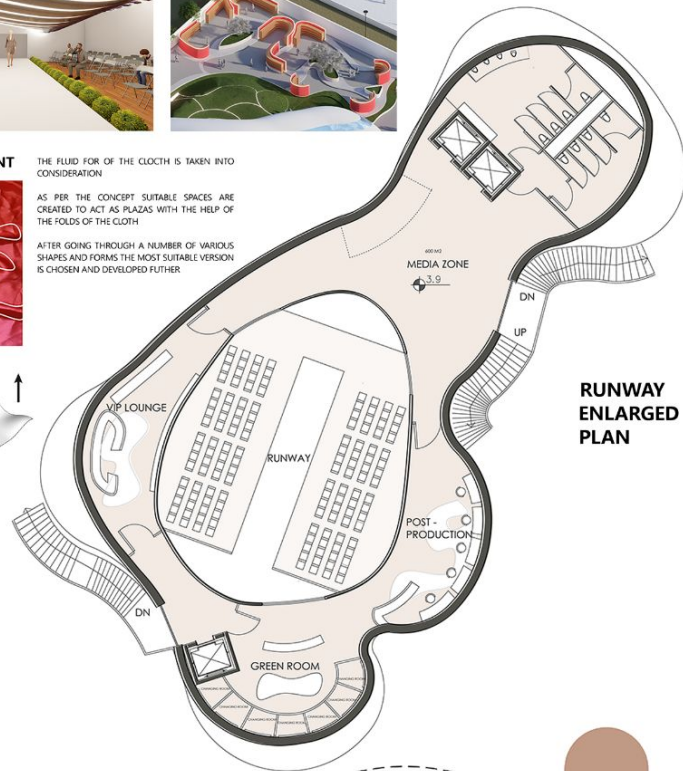
### FORM DEVELOPMENT



THE FLUID FORM OF THE CLOTH IS TAKEN INTO CONSIDERATION

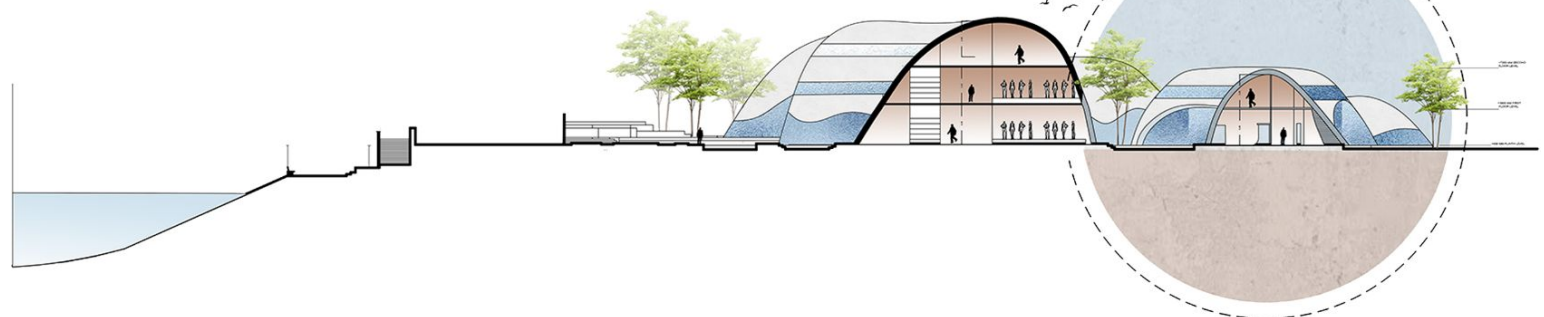
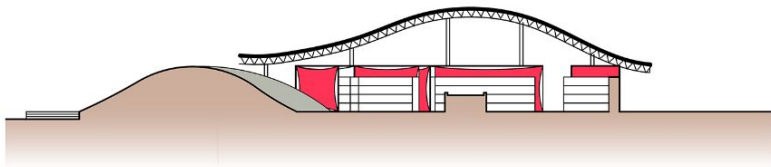
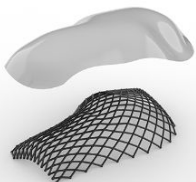
AS PER THE CONCEPT SUITABLE SPACES ARE CREATED TO ACT AS PLAZAS WITH THE HELP OF THE FOLDS OF THE CLOTH

AFTER GOING THROUGH A NUMBER OF VARIOUS SHAPES AND FORMS THE MOST SUITABLE VERSION IS CHOSEN AND DEVELOPED FURTHER



**RUNWAY ENLARGED PLAN**

### DIAGRID FRAMING :





# EDITORIAL TEAM

## **Members :**

Vidula Ghodekar ( Head )

Chiara Karnik ( Co-head )

Darsh Ranawat

Purva Shirke

## **Volunteers :**

Tanvi Sonar

Nikita Singh

Pallavi Taori

Devika Kurup

Sanika Deshpande

Suyash Ghodke



